



LOCKFOCUS

CREATING SOLUTIONS SINCE 1972



PRODUCT CATALOGUE

2021

CONTACT US

PHONE: +61 3 9798 1322

Email: sales@lockfocus.com.au



LOCK FOCUS (Head Office)

15 -17 Futura Road

Keysborough, 3173

Victoria, Australia

Telephone: +61 3 9798 1322

Email: sales@lockfocus.com.au

Website: www.lockfocus.com.au

ABOUT US

Lock Focus - Creating Solutions since 1972

Designs and manufacturers locks for all commercial, industrial & residential applications.

Our Melbourne design and manufacturing operations were established in 1972 and in this time Lock Focus has developed a modern, world-class facility situated in the South Eastern suburbs of Melbourne. Lock Focus has evolved from its origins in the UK more than 100 years ago, to be a major manufacturer of disc tumbler locks; along with numerous market & customer specific hardware products; both mechanical & electrical.

Employing around 50 people, all manufacturing is currently produced at this single, purpose-built facility utilising the latest automation equipment. The introduction of automation was a key step to ensuring we consistently produce product at high volumes with a high quality at customer specific lead times. Due to our success; Lock Focus remains as one of the last lock manufacturing companies in Australia.

Lock Focus aims to be the supplier of choice for Original Equipment Manufacturers (OEM's), Specifiers and Trade Retailers by providing tailored locking solutions; supported by exceptional service.

In 2016 Lock Focus was acquired by Safecorp Group, an Australian-owned, unlisted public company. Enjoying over 30 years of steady profit growth, Safecorp now ranks in the top 500 Private Companies in Australia and has a passion for local Australian manufacturing.

Lock Focus has for over 48 years supplied the Australian hardware industry brands such as Kiroo, Emka, Lowe & Fletcher and Locktech; and is driven to continue to be a leading supplier of locks across Australia.



Facilities

Lock Focus operates a facility in Keysborough, Victoria which has the capacity to transform metal bar stock into products suitable for all applications in any environment.

At our facility we design the product, develop the tools, cast the base product and assemble the end components to our customer's specifications. We gain our success through specialising in Zinc Die-casting, Press Shop manufacturing, Key Automation and Automated Storage warehousing.

In recent years we have carefully invested in automating our facility and process to reduce our costs of production and to ensure we maintain a high level of quality at global standards. This also ensures that we can provide a cost effective solution for our customers in a timely manner to match all types of modern day supply demands.

Our facility is open for customer tours throughout the year and we welcome you to come see how we go about our business. We have a range of high pressure zinc diecast machines; a number of presses that process steel & brass components; a fully operational tool room; an automated key manufacturing system and automated barrel assembly systems.

ABOUT US

Associated Companies & Exclusive Distribution

Lowe & Fletcher (L&F)



Lowe & Fletcher design and manufacture locking systems for a broad range of industrial customers. Their locking systems range from simple mechanical locks to the latest electronic solutions and can also offer bespoke products, enabling Lock Focus to meet diverse locking requirements. L&F's advanced factory based in the UK supplies locks to Ireland, the Middle East, Canada, India, Africa and the Caribbean and totals 70 million locks annually around the world.

EMKA Group



The EMKA GROUP is a world leader for locking systems, hinges and sealings, which are used in cabinets and control cabinets for electronics and electrical engineering. In the areas of air conditioning technology and transport, EMKA is one of the leading manufacturers of total locking technology.

The product range comprises 15,000 items that are developed, manufactured, processed and assembled at ten production sites in Germany, France, England, Spain, Bosnia-Herzegovina, Serbia, China and India. The company supplies 52 countries worldwide of which Lock Focus distribute through Australia and New Zealand.

Eagle Safes



Eagle Safes was founded in 1972 and quickly earned a reputation for manufacturing & supplying high quality safes from Korea to the rest of the world. As a leader in the Korean safe market Eagle Safes have developed many technologies and accumulated a vast amount of know-how. They have played a pivotal role in upgrading the standard of safe manufacturing to meet international demands. They support over 100 partners worldwide of which Lock Focus is one.

HOW WE WORK

OUR VISION

Lock Focus aims to be the supplier of choice for OEM's and specifiers by providing tailored locking solutions supported by exceptional service.

OUR MISSION

We will achieve our mission by:

- Considering our customers in every decision we make.
- Ensuring our customers are our product drivers and that we meet their needs.
- Putting innovation and the product development strategy at the core of what we do.
- Continuously improve our manufacturing methodologies to maintain quality and reduce costs.
- Improve customer service for all mechanical and electronic offerings.
- Developing skills in an enjoyable, safe, healthy and team focused environment.

OUR PROCESS

At Lock Focus we aim to be the supplier of choice for OEM's: our goal is to provide tailored locking solutions specific to individual customer requirements. We work with our customers through the following process to achieve the maximum results:



1. **Project Goals and Research** - What is the project purpose, expected outcome & time frame? Initial customer interactions, exploratory research & competitor products review.
2. **Initial Concepts and Agreement** - Collaborative Statement of Requirements (SOR) Project intent, Design, Commitments, Approvals and Initial concepts presentation.
3. **Targeting Solution** - Initial CAD concepts, prototyping, client input and review.
4. **Solution Development** - Final CAD design, Customer approvals & supply agreements, testing, final customer approvals, tooling order, off tool samples (die trials & approvals).
5. **Production** - Product release, technical brochures, launch strategy.

CONTENTS

Product categories have been colour coded for ease of reference. Identify colour on lower corners of each product page.

CABINET AND DRAWER LOCKS



Bolt Locks	11
Projection Locks	15
Filing Cabinet Locks	17
Spindle Locks	19
Spanner Locks	21

CAM LOCKS



Cam Locks 11mm - 32mm	23
Flange Fix Locks	27
Latch Locks	30
Radial Pin Tumbler	31
Accessories	32

DOOR HARDWARE



Push Locks	35
Cylinders	39
Accessories and Multi-Purpose	42

GARAGE ROLLER DOOR LOCKS



Roller Door locks	47
-------------------	----

HANDLES



Flush Handles	55
Swing Handles	57
T & L Handles	59
T & L Handles - Pin Cylinder	64
Compression Latch	65

CONTENTS

LOCKTECH



Asset Management System	67
Electronic Locks	68

SPECIAL APPLICATION



Bin Locks	71
Industrial Bin Lock - A/LIDI	72
32mm - 50mm Water Meter Locks	73
20mm - 25mm Water Meter Locks	74
Tap Lock	75
Hydrant G Lock	75
Commercial Bi-Fold Lock	76
Padlock	76
Class B/Class C Locks	77
UTE Canopy Lock	78
Protecta Lock	79

WINDOW LOCKS



Sash Locks	81
Sliding Window Locks	83
Push and Twist Vent Lock	83
Multi-Purpose Locks	84
Window Push Lock	84
Window and Mini Window Bolt	85
Casement Awning Latch	85

APPENDIX A

Pressed Cam Range	87
-------------------------	----

APPENDIX B - MOVEMENT

General	92
Bin Locks	92
C Movement Camlock	92

WARRANTY

Warranty /Guarantee	93
Terms & Conditions	94
Privacy Policy	95
Contact Us	98

CONTENTS

CABINET AND DRAWER LOCKS

BOLT LOCKS	11
Quick Reference Guide	11
Bolt Options B & C	12
Bolt Options F & R	12
Fixing Details for Bolt Locks	12
19mm & 22mm Vertical Projection Bolts	13
22mm Vertical Projection Bolt - Barrel Exchange	13
19mm & 22mm Right/Left Projection Bolts	13
22mm Right/Left Projection Bolt - Barrel Exchange	13
C4 Universal Drawer Bolt	14
Fixing Details for C4 Bolt	14
PROJECTION LOCKS	15
Quick Reference Guide	15
Fixing Details for Square Back Bolt	16
Fixing Details for 6mm/20mm Lever Lock	16
Square Back Bolt with Vertical Projection	16
Square Back Bolt with Left Projection	16
Square Back Bolt with Right Projection	16
Vertical/Left/Right Projection-Barrel Exchange	16
6mm Lever Lock	16
22mm Lever Lock	16
FILING CABINET LOCKS	17
Quick Reference Guide	17
Fixing Details	18
19mm Round Face	18
19mm Square Face	18
20mm Round Face	18
20mm Square Face	18
20mm Flat Face	18
20mm Barrel Exchange	18
SPINDLE LOCKS	19
Quick Reference Guide	19
Fixing Details for 19mm & 20mm Spindle Locks	20
19mm Spindle Lock	20
19mm Spindle Lock Slamlock	20
20mm Spindle Lock	20
SPANNER LOCKS	21
Key Lockable Spanner Lock	21
Spanner Lock	21

CAM LOCKS

CAM LOCKS 11mm - 32mm	23
Quick Reference Guide	23
Installation Cut-Out, 11-16mm Camlock	24
11mm Cam Lock Round Face	24
11mm Cam Lock Square Face	24
16mm Cam Lock Round Face	24
16mm Cam Lock Square Face	24
19mm Cam Lock Round Face	25
19mm Cam Lock Square Face	25
19mm Cam Lock Round Face Quick fix	25
19mm Cam Lock Square Face Quick fix	25
20mm Cam Lock (Slim Face) Round Face	25
20mm Cam Lock (Slim Face) Square Face	25
20mm Cam Lock (Slim Face) Round Face Quick fix	25
20mm Cam Lock (Slim Face) Square Face Quick fix	25
20mm Barrel Exchange Cam Lock Round Face	25
22mm Cam Lock Round Face	26
32mm Cam Lock Round Face	26

CAM LOCKS cont.

FLANGE FIX LOCKS	27
Quick Reference Guide	27
Installation Instructions	28
Back Fix Horizontal Mount	28
Multi Drawer	28
Multi Drawer Single Flange	28
Multi Drawer Back Fix Vertical Mount	29
Back Fix Vertical Mount - Barrel Exchange	29
Back Fix Horizontal Mount - Barrel Exchange	29
LATCH LOCKS	30
Latch Lock 16mm	30
Latch Lock 19mm	30
RADIAL PIN TUMBLER	31
ACCESSORIES	32
Camlock Spacer - T/SPAC	32
Camlock Flat Washer - O/CWFL	32
Camlock Prong Washer - O/CWPR	32
Hamper/Tambour Door Lock - M/CAM P6 and M/STRK P6	32
Bezels	32

DOOR HARDWARE

PUSH LOCKS	35
Quick Reference Guide	35
12mm throw Zinc	36
12mm throw S/S	36
11mm throw	37
Projection Pin	37
Material/Fixing Code	37
PP5 Front/Rear Fix Cover	38
PP5 Front Fix Cover - S/S	38
CYLINDERS	39
Quick Reference Guide	39
AD4	40
AD6	40
AD7	40
AD8	41
AT1-4	41
ACCESSORIES AND MULTI-PURPOSE	42
Flush Mounting Tabs	42
Security Cylinder Trim	42
Patio Bolt	43
Euclid200	44

GARAGE ROLLER DOOR LOCKS

ROLLER DOOR LOCKS	47
Quick Reference Guide	47
Internal Latch Override	48
V9C4 & V9LP Freelatch vs Deadlocking	48
V1	49
V2	49
V3	50
V4	50
V5	51
V7	51
V9	52
V9C4	52
V9LP	52

CONTENTS

HANDLES

FLUSH HANDLES	55
Quick Reference Guide	55
Installation Instructions	56
Plastic/Metal Pan	56
C4 Pan	56
Pad Lockable-Heavy Duty Latch Lock	56
SWING HANDLES	57
Quick Reference Guide	57
Installation Instructions	58
HS741-HS744	58
F736-F737	58
F738	58
T & L HANDLES	59
Quick Reference Guide	59
Assembly Instructions	60
Spindles	60
T & L Handles - Cams, Spindles and Rotation	61
T & L Handles - Cams, Spindles and Movement	62
Large T Handle	63
Small T Handle	63
Lever Handles	63
Lever Handle - Padlocking	63
T & L HANDLES - PIN CYLINDER	64
Assembly Instructions	64
L Handle	64
T Handle	64
COMPRESSION LATCH	65

LOCKTECH

ASSET MANAGEMENT SYSTEM	67
ELECTRONIC LOCKS	68

SPECIAL APPLICATION

BIN LOCKS	71
Quick Reference Guide	71
Gravity Lid Lock	72
Manual Lid Lock	72
INDUSTRIAL LID LOCK - A/LIDI	72
32mm - 50mm WATER METER LOCKS	73
32mm Itron, water meter lock	73
32mm Elster, water meter lock	73
40mm Elster, water meter lock	73
50mm Elster, water meter lock	73
20mm - 25mm WATER METER LOCKS	74
20mm Vertical Water Meter Lock	74
20mm Horizontal Water Meter Lock, Round	74
20mm Horizontal Water Meter Lock, Hexagonal	74
25mm Water Meter Lock	74
TAP LOCK	75
HYDRANT G LOCK	75
COMMERCIAL BI-FOLD LOCK	76
PADLOCK	76
CLASS B/ CLASS C LOCKS	77

SPECIAL APPLICATION cont.

Class B	77
Class C	77
UTE CANOPY LOCK	78
PROTECTA LOCK	79

WINDOW LOCKS

SASH LOCKS	81
Quick Reference Guides	81
Strike Options	82
DH90	82
DH180	82
Sash Lift Handle	82
SLIDING WINDOW LOCKS	83
PUSH AND TWIST VENT LOCK	83
MULTI-PURPOSE LOCKS	84
WINDOW PUSH LOCK	84
WINDOW AND MINI WINDOW BOLT	85
CASEMENT AWNING LATCH	85

APPENDIX A

PRESSED CAM RANGE	87
Cam Types	87
Product Options	87
Flat Cams	88
Single Bend Cams	88
Double Bend Cams	88
Double Bend Cams cont.	89
Bent S Cams	89
Hooked Cams	89
Single Point Pinned - T	89
Single Point Pinned - A	89
2 Point Pinned	90
3 Point Pinned - A	90
3 Point Pinned - T	90
3 Point Locking	90
Fixing details	91

APPENDIX B - MOVEMENT

GENERAL	92
BIN LOCKS	92
C MOVEMENT CAMLOCK	92

WARRANTY

WARRANTY/GUARANTEE	93
TERMS & CONDITIONS	94
PRIVACY POLICY	95
CONTACT US	98

LOCK FOCUS

Creating Solutions since 1972





CABINET AND DRAWER LOCKS

BOLT LOCKS

Ideal for use on drawers. Available in a wide variety of sizes and fixing options.

FEATURES & SPECIFICATIONS

- Zinc alloy housing with Bright Chrome finish.
- Stainless steel capped barrel.
- Key removable in locked and unlocked positions.
- Zinc plated steel bolt.
- Available in round or square face.
- Pressed steel back plate.
- Rotating key 180° results in bolt movement.
- Compatible with 16mm and 19mm boards.
- Can be used with Bezel, see P. 32.

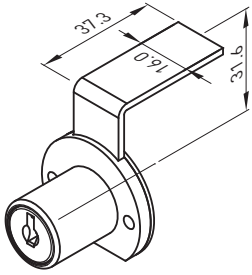


QUICK REFERENCE GUIDE

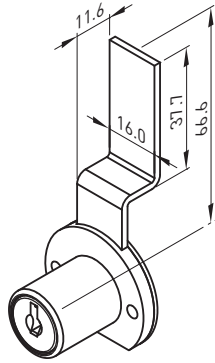
Lock	Key Series	Movement
19mm Vertical Projection Bolt	01, 02	B
19mm Left Projection Bolt	01, 02	B
19mm Right Projection Bolt	01, 02	B
22mm Vertical Bolt Projection	01, 02, 07, 08, 17, 18	B
22mm Left Bolt Projection	01, 02, 07, 08, 17, 18	B
22mm Left - Barrel Exchange	R2, RE, RX, XT	B
22mm Right Bolt Projection	01, 02, 07, 08, 17, 18	B
22mm Right - Barrel Exchange	R2, RE, RX, XT	B
C4 Universal Drawer Bolt	KA, KD	N/A

BOLT LOCKS

BOLT TYPES B & C

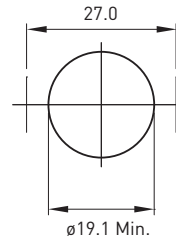


BOLT TYPE B



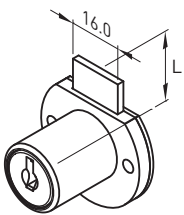
BOLT TYPE C

Fixing Details for Bolt LOCKS

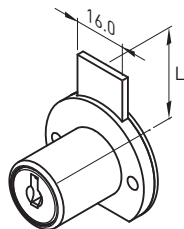


Fixing Details
Note: fixing holes $\varnothing 20.0$
if bezel is used

BOLT TYPES F & R



BOLT TYPE FX
Bolt out of flat

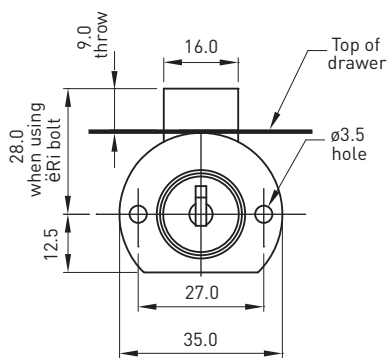


BOLT TYPE RX
Bolt out of round

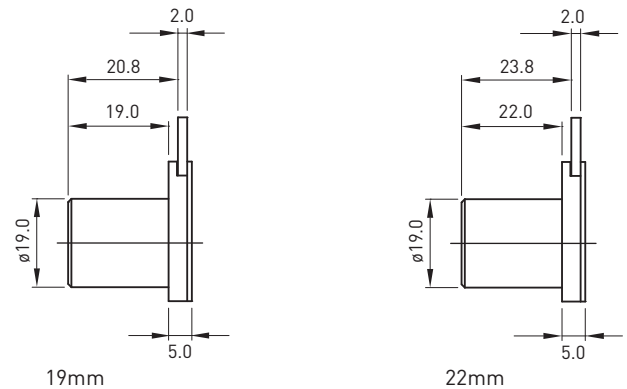
Call Out code	Dimension L
V	19.5
F	21.5
R	28
X	40.5
L	49.5
M	51.5

BOLT LOCKS

Vertical Projection BOLT



19mm & 22mm

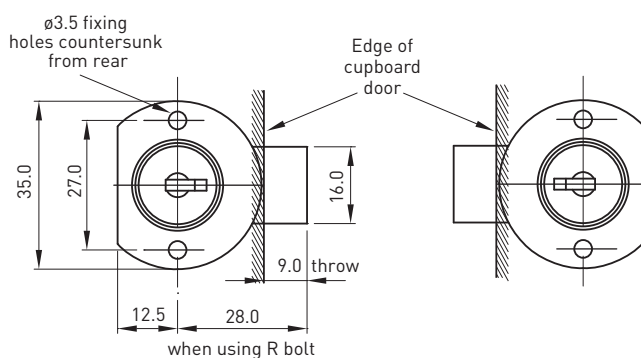


19mm	A/PB1V
------	--------

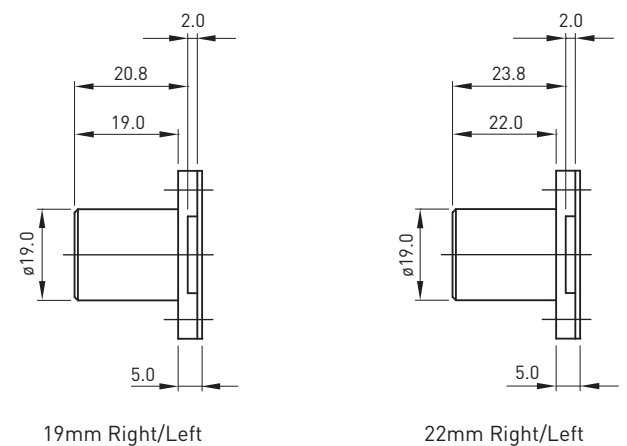
22mm*	A/PB2V
-------	--------

*Available with barrel exchange

Right/Left Projection BOLT



19mm & 22mm Right/Left



19mm Right	A/PB1R
------------	--------

19mm Left	A/PB1L
-----------	--------

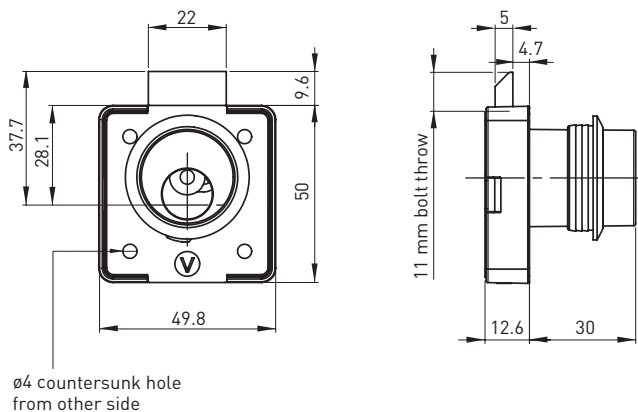
22mm Right*	A/PB2R
-------------	--------

22mm Left*	A/PB2L
------------	--------

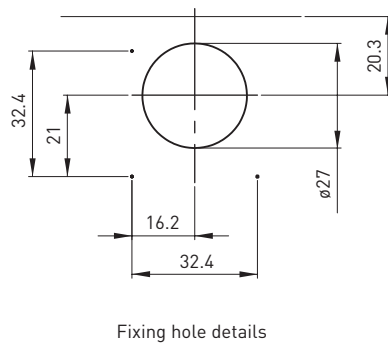
*Available with barrel exchange

BOLT LOCKS

C4 Universal Drawer Bolt



Fixing Details for C4 Bolt



C4 Universal Drawer Bolt

I/PBC4

PROJECTION LOCKS

These locks are most suited for cupboards.

FEATURES & SPECIFICATIONS

- Zinc alloy housing with Bright Chrome finish.
- Zinc alloy diecast bolt.
- Key removable in locked and unlocked positions.
- Positive click action mechanism.
- Rotating key 180° results in bolt movement.
- Square Back Bolts suit panels up to 19mm thick.
- Lever Locks suit panels up to 22mm thick.
- Can be used with Bezel, see P. 32.



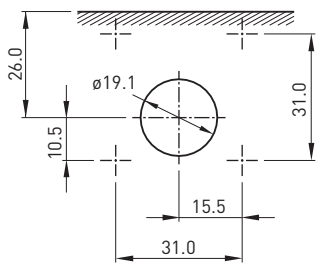
QUICK REFERENCE GUIDE

Lock	Finish	Key Series
Square Back Bolt with Vertical Projection	Bright Chrome	01, 02, 07, 08, 17, 18
Square Back Bolt with Left Projection	Bright Chrome	01, 02, 07, 08, 17, 18
Square Back Bolt with Right Projection	Bright Chrome	01, 02, 07, 08, 17, 18
Vertical/Left/Right Projection - Barrel Exchange	Bright Chrome	R2, RX, XT
6mm Lever Lock	Natural	ZA
22mm Lever Lock	Natural	ZL

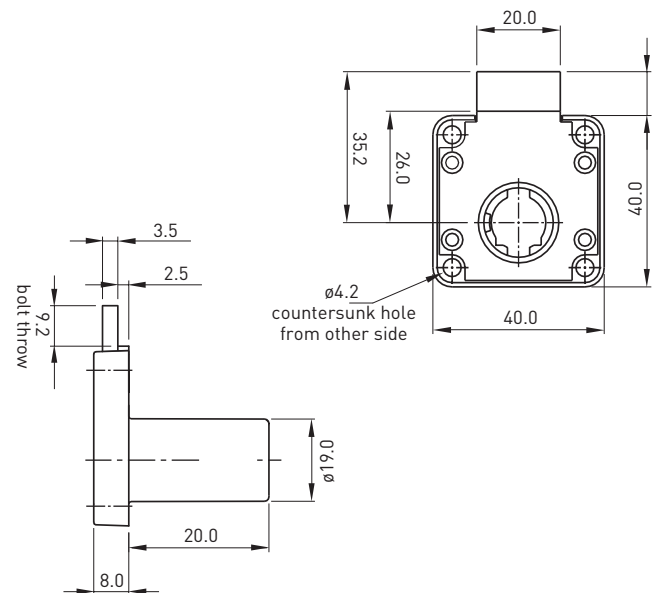
PROJECTION LOCKS

Fixing Details for Square Back Bolt

Edges location will change pending locking on the left/right/vertical.



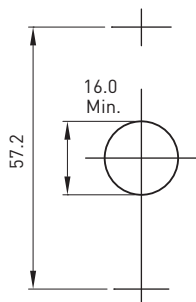
Square Back Bolt*



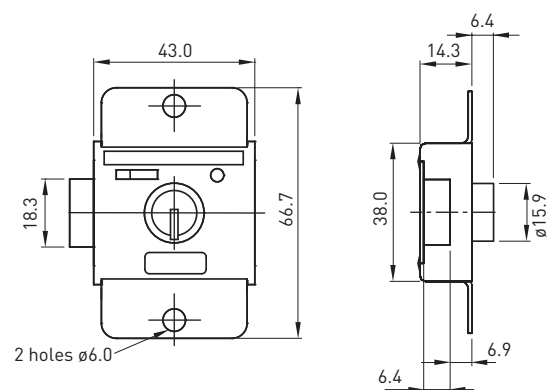
Square Back Bolt - Vertical	A/PBSV
Square Back Bolt - Right	A/PBSR
Square Back Bolt - Left	A/PBSL

*Available with barrel exchange

Fixing Details for 6mm/22mm Lever Lock



Lever Lock



6mm Lever Lock	A/PN06
22mm Lever Lock	A/PN22

FILING CABINET LOCKS

Suited to a wide range of filing cabinets. Available in a number of shapes, movements, fixing methods and keying. The lock can be fitted in seconds by simply pushing into panel cut-out.

FEATURES & SPECIFICATIONS

- Zinc alloy housing with Bright Chrome finish.
- Zinc plated steel cam.
- Key removable in locked and unlocked positions.
- Rotating key 180° results in rotary cam movement.
- Stainless steel capped barrel.
- Suits 0.5 - 0.9mm thick panels.
- Available in round and square faces.
- For cam options see P. 86.

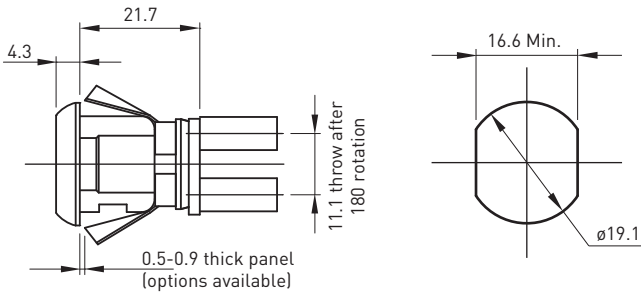


QUICK REFERENCE GUIDE

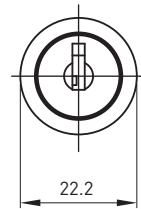
Lock	Key Series	Fixing	Cam Options
19mm - Round Face	01, 02, 07, 08, 17, 18	Z, Y	DM, MS, 82, 88
19mm - Square Face	01, 02, 07, 08, 17, 18	Z, Y	D4, 82, 88
20mm - Round Face	01, 02, 07, 08, 17, 18	Q, K	D4, 82, 85
20mm - Square Face	01, 02, 07, 08, 17, 18	Q, K	D4, 82, 85
20mm - Flat Square Face	01, 02, 07, 08, 17, 18	Q, K	D4, 88
20mm - Barrel Exchange	R2, RE, RX, XT	N, Z	DM, MS, 82

FILING CABINET LOCKS

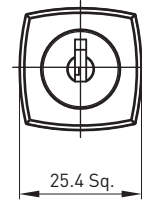
Fixing Details for filing Cabinet Locks



19mm



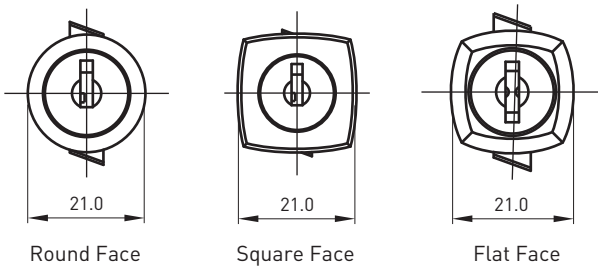
Round Face



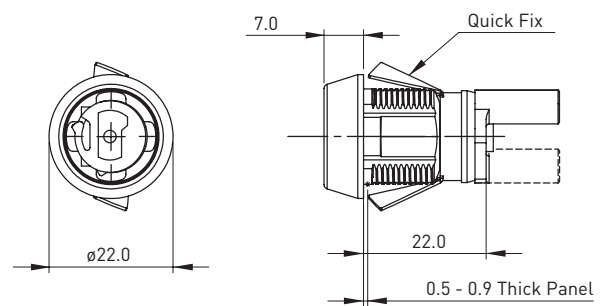
Square Face

Round Face	A/FRX1
Square Face	A/FSX1

20mm



20mm Barrel Exchange



Round Face	A/FRX2
Square Face	A/FSX2
Flat Square Face	A/FNX2

Round Face	A/FX--
------------	--------

SPINDLE LOCKS

Suitable for multi-drawer cabinets. Available in a wide range of shapes, movements, fixing methods and keying

FEATURES & SPECIFICATIONS

- Zinc alloy housing with Bright Chrome finish.
- Stainless steel capped barrel.
- Key removable in locked and unlocked positions.
- 20mm spindle has double entry key.
- Pressed steel back plate.
- Rotating key 180° results in rotary spindle movement.
- For fixing details see P. 91.
- For movement details see P. 92.

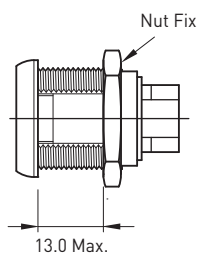
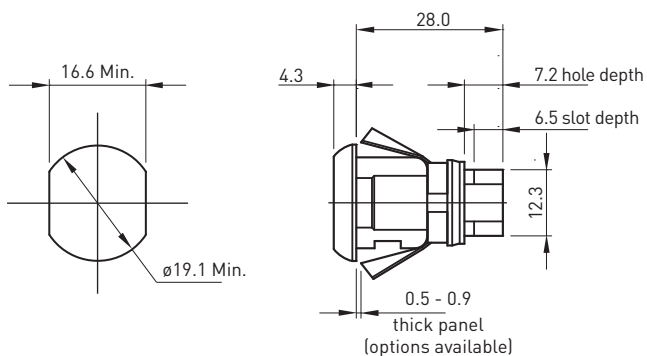


QUICK REFERENCE GUIDE

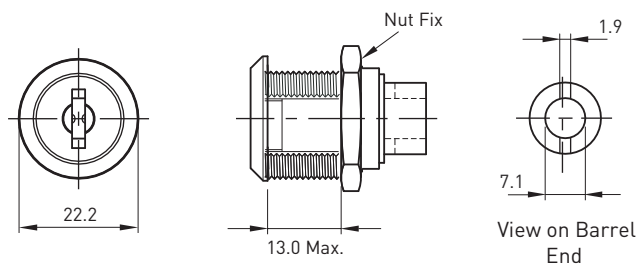
Lock	Key Series	Movement	Fixing
19mm Spindle Lock	01, 02, 11, 12	B	NFR
19mm Spindle Stamlock	01, 02, 11, 12	S	NFR
20mm Spindle Lock	07, 08, 17, 18	B	NFR

SPINDLE LOCKS

Fixing Details for 19mm & 20mm Spindle Lock



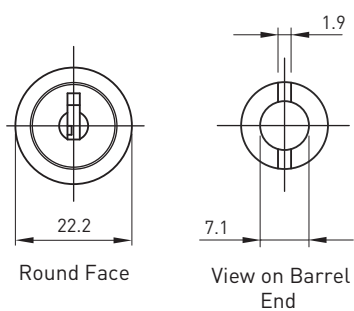
20mm Spindle Lock



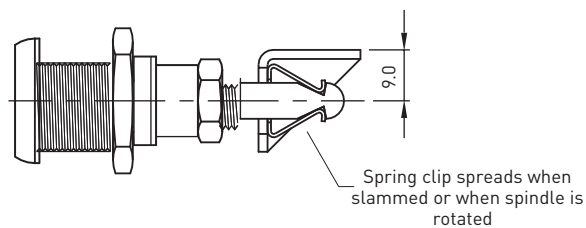
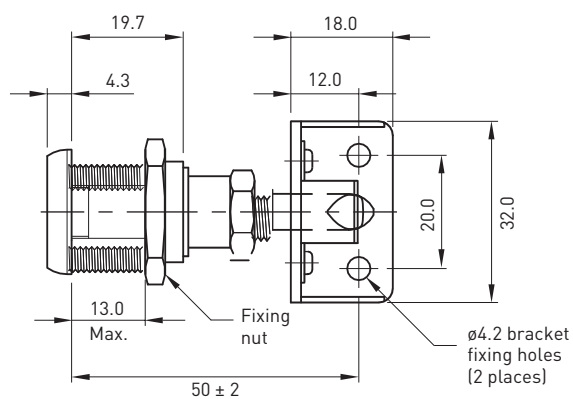
Spindle Lock

A/SR20

19mm Spindle Lock



19mm Spindle Lock Slamlock



Spindle Lock

A/SR19

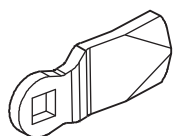
Spindle Lock with Bracket

A/SR19 with Bracket

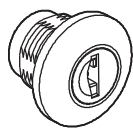
SPANNER LOCKS

KEY LOCKABLE SPANNER LOCK

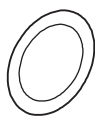
Suitable for a variety of cabinets and lockers



CAM



LOCK



RUBBER WASHER



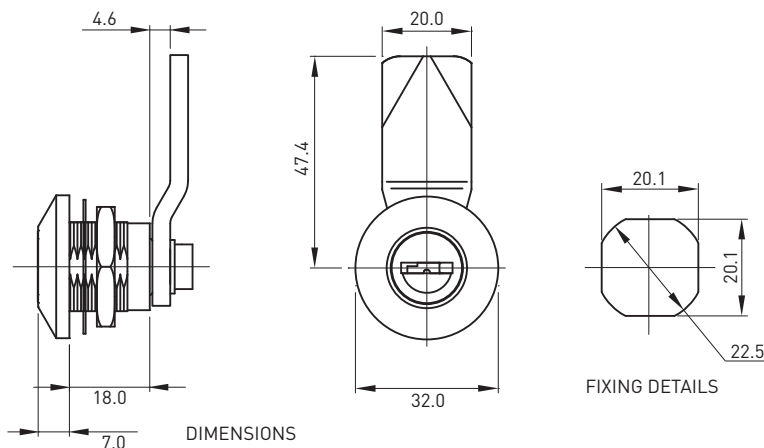
LOCK FIXING NUT



CAM FIXING SCREW



'O' RING



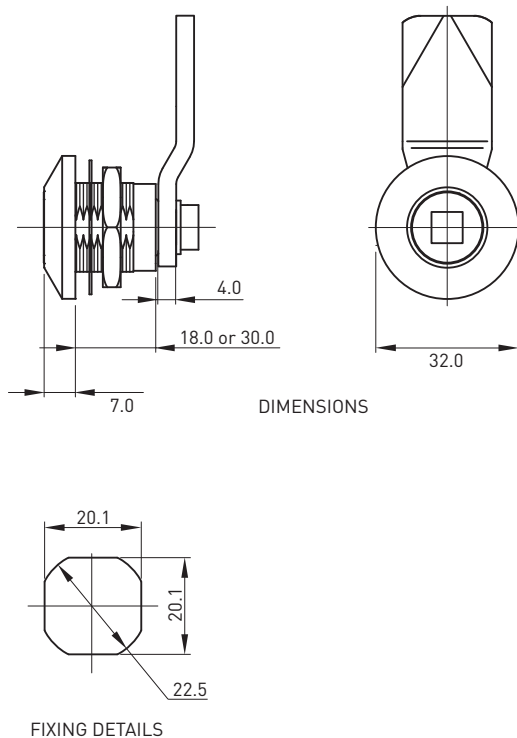
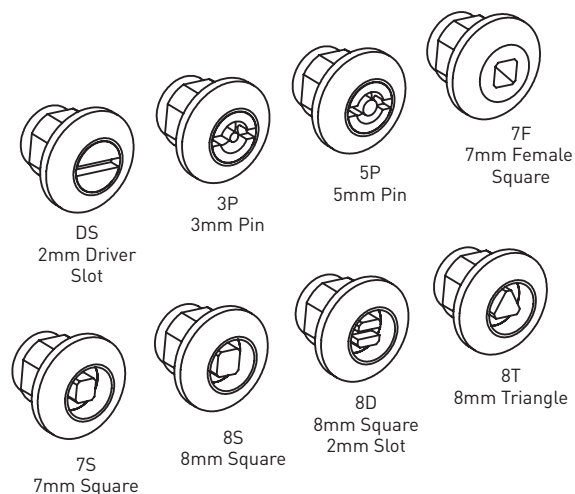
Key Lockable Spanner lock

A/SP18

SPANNER LOCK

FEATURES AND SPECIFICATIONS

- Suitable for a variety of cabinets and lockers.
- Available in a number of unlocking options including pin and square drive.
- Available in 18mm or 30mm long body.



18mm Spanner lock

A/SR18

30mm Spanner lock

A/SR30



CAM LOCKS

CAM LOCKS 11mm - 32mm

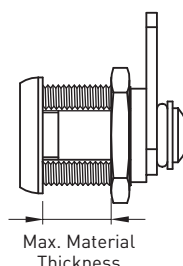
The Lock Focus camlock is suitable to a wide variety of applications, ranging from sheet metal doors, drawers & office furniture. Camlocks can also be used on wooden furniture (thickness dependent).

FEATURES & SPECIFICATIONS

- Zinc alloy housing with bright chrome finish.
- Stainless steel capped barrel.
- Key removable in locked and unlocked positions (B movement only).
- Key removable in locked position only (S and A movements).
- Master and non-master keying.
- 90 or 180 degree movement, refer P. 92 (Movement).
- Clockwise or anti-clockwise movement.
- Nut fixing, across flats or across rounds clip fixing, refer to P. 91 (Fixing).
- Multiple cams available, refer P. 86 (Cams).



MATERIAL COMPATIBILITY



Max. Material Thickness

11mm Camlock	4.0
16mm Camlock	8.0
19mm Camlock	13.0
20mm Camlock	13.0
22mm Camlock	16.0
32mm Camlock	27.0

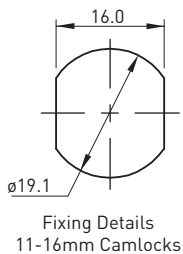
QUICK REFERENCE GUIDE

Cam Lock	Square	Round	Key Series	Movement	Fixing
11mm	Y	Y	01-18	BSAC*	NFR
16mm	Y	Y	01-18, CL, FS	BSAC*	NFR
19mm	Y	Y	01-18, CL	BSAC*	NFRQK
20mm	Y	Y	07,08,17,18	BSAC*	NFRZY
20mm Barrel Ex	N	Y	R2, RE, RX, XT	BC	NFRZ
22mm	N	Y	01-18, ES	BC	NW
32mm	N	Y	01-18, CL, ES	BC	NW

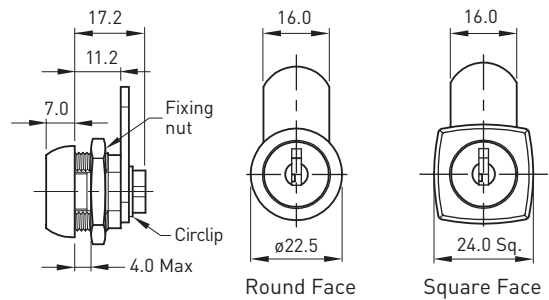
*(C=Round face with nut only)

CAM LOCKS 11mm - 32mm

INSTALLATION CUT-OUT 11-16mm Camlock

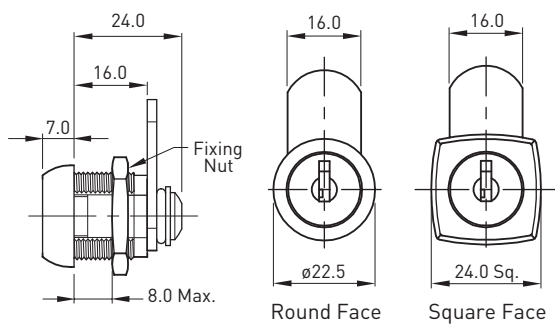


11mm CAM LOCK



Round Face	A/CR11
Square Face	A/CS11

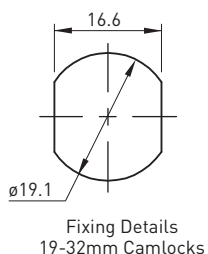
16mm CAM LOCK



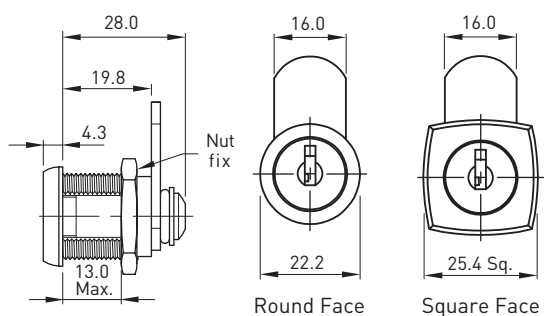
Round Face	A/CR16
Square Face	A/CS16

CAM LOCKS 11mm - 32mm

INSTALLATION CUT-OUT 19-32mm Camlock

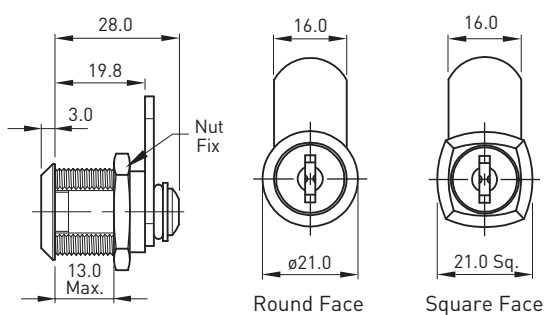


19mm CAM LOCK

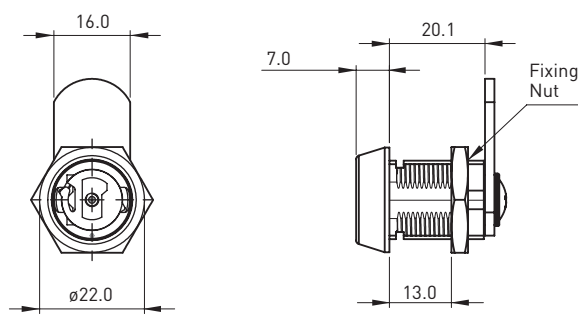


Round Face	A/CR19
Square Face	A/CS19
Round Face Quick Fix	A/CRX1
Square Face Quick Fix	A/CSX1

20mm CAM LOCK (SLIM FACE)



20mm BARREL EXCHANGE CAM LOCK

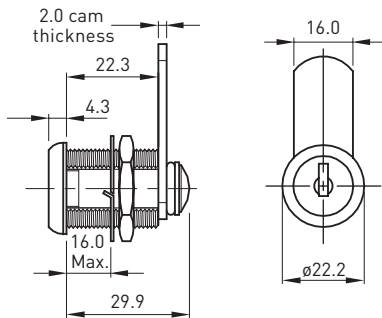


Round Face	A/CR20
Square Face	A/CS20
Round Face Quick Fix	A/CRX2
Square Face Quick Fix	A/CSX2

Round Face	A/CX--
------------	--------

CAM LOCKS 11mm - 32mm

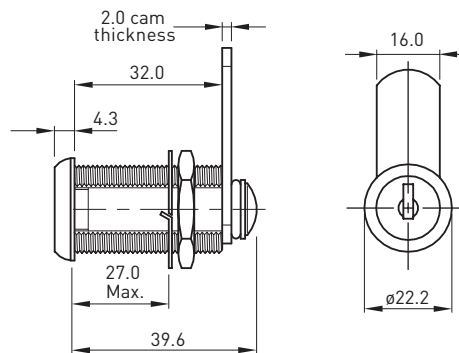
22mm CAM LOCK



Round Face

A/CR22

32mm CAM LOCK



Round Face

A/CR32

FLANGE FIX LOCKS

These locks are best suited for doors and drawers. Rotating the key results in rotation of either a rotary cam or 13mm throw.

FEATURES & SPECIFICATIONS

- Zinc alloy diecast housing.
- Zinc alloy diecast cam/throw.
- Key removable in locked and unlocked positions.
- Rotating key 180° results in rotary cam movement.
- Stainless steel capped barrel.
- The lock fits into a 19.1mm diameter hole.
- Suits panels up to 19mm thick.
- Can be used with Bezel, see P. 32.

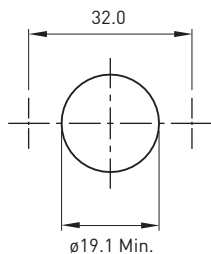


QUICK REFERENCE GUIDE

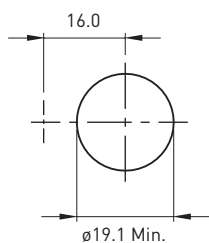
Lock	Key Series	Movement
Back Fix Hor. mount	01, 02, 07, 08, 17, 18	BC
Multi Drawer	01, 02, 07, 08, 17, 18	B
Multi Drawer single flange	01, 02, 07, 08, 17, 18	B
Back Fix Ver. mount	01, 02, 07, 08, 17, 18	B
Back Fix Hor. mount barrel exchange	R2, RE, RX, XT	B
Back Fix Ver. mount barrel exchange	R2, RE, RX, XT	B

FLANGE FIX LOCKS

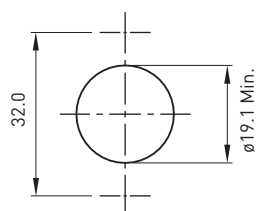
INSTALLATION INSTRUCTIONS



Horizontal Mount

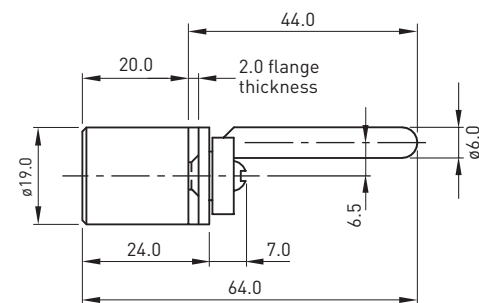
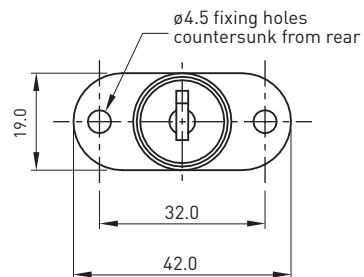


Single Flange Mount



Vertical Mount

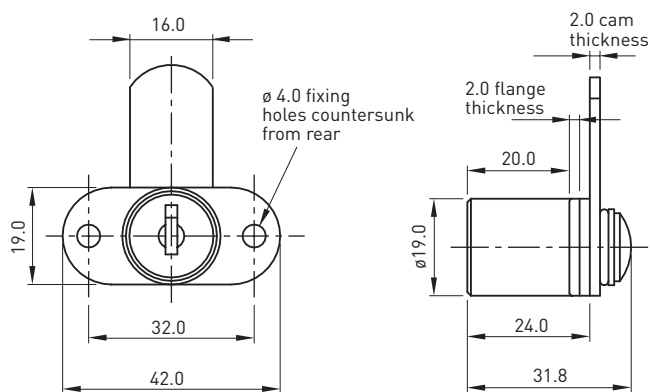
Multi Drawer



Back Fix Horizontal Mount

A/CB2D

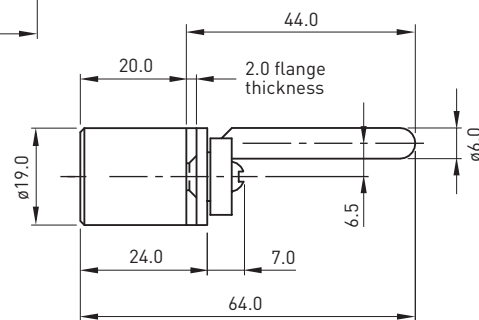
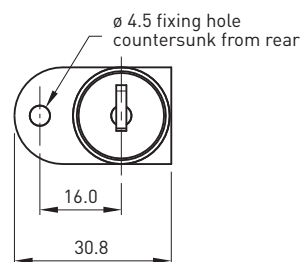
Back Fix Horizontal Mount



Back Fix Horizontal Mount

A/CB20

Multi Drawer Single Flange

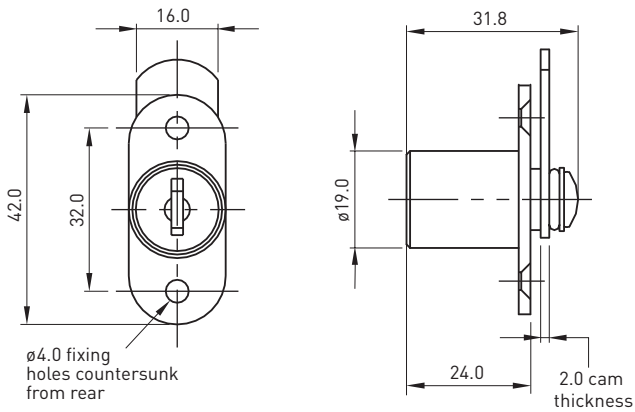


Back Fix Horizontal Mount

A/CB2S

FLANGE FIX LOCKS

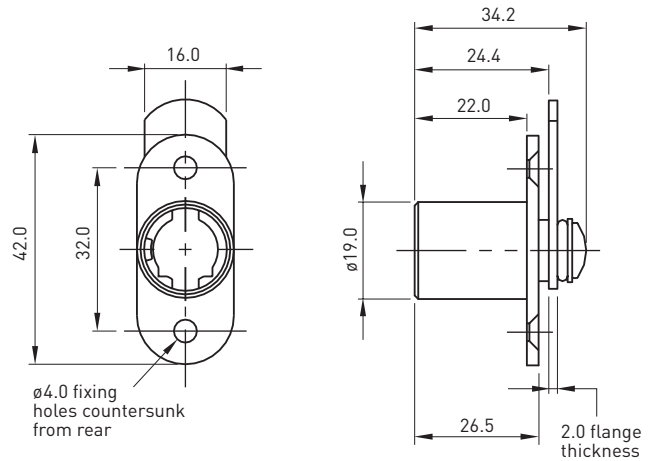
Multi Drawer Back Fix Vertical Mount



Back Fix Vertical Mount

A/CB2V

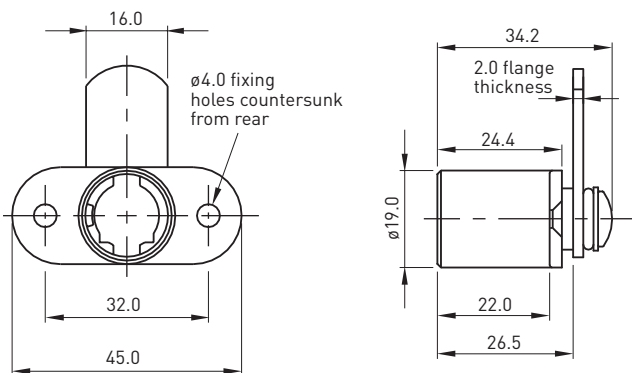
Back Fix Vertical Mount - Barrel Exchange



Back Fix Vertical Mount

A/CB3V

Back Fix Horizontal Mount - Barrel Exchange



Back Fix Horizontal Mount

A/CB3H

LATCH LOCKS

Suitable for drawers and doors when no Locking security required

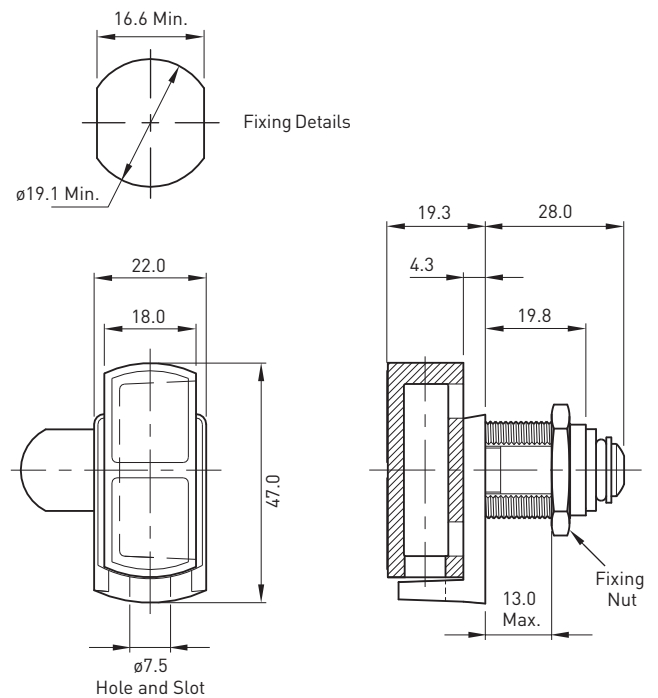
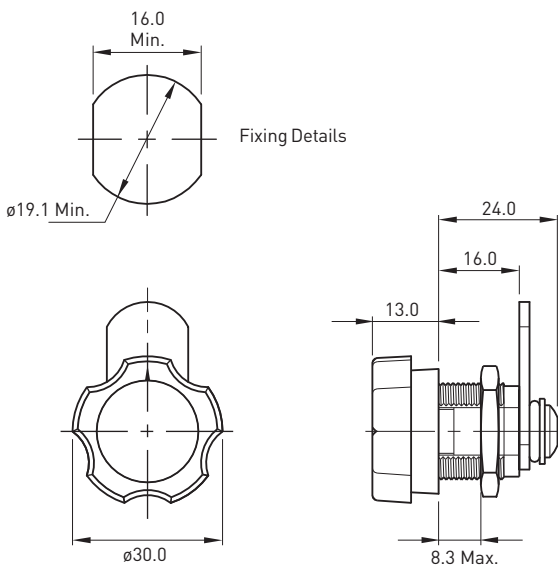
FEATURES & SPECIFICATIONS

- Zinc alloy die cast knob and housing.
- Zinc plated steel cam.
- Nut fixed.
- Allows movements B S A.



Latch Lock 16mm

Latch Lock 19mm



Latch Lock 16mm

A/L316

Latch Lock 19mm

A/L419

RADIAL PIN TUMBLER

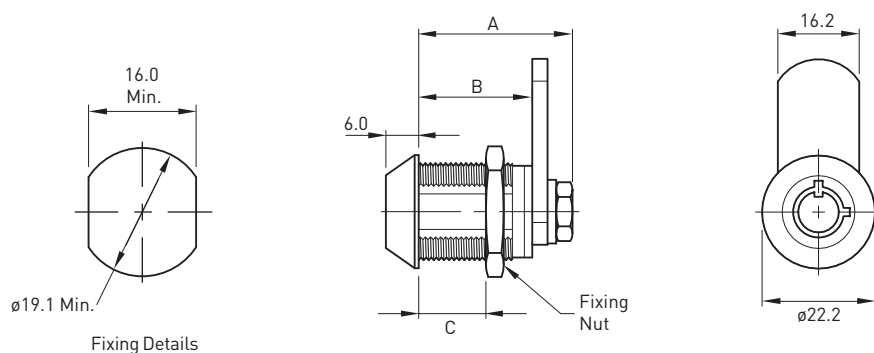
These locks are best suited for doors and drawers.

FEATURES & SPECIFICATIONS

- Zinc alloy diecast housing.
- Rotating the key results in 90° rotary cam movement.
- Zinc plated steel cam.
- Brass Nut fixing.
- Allows movements - S A C.
- Can be fixed by 3mm or 6mm nut.



Radial Pin Tumbler



QUICK REFERENCE GUIDE

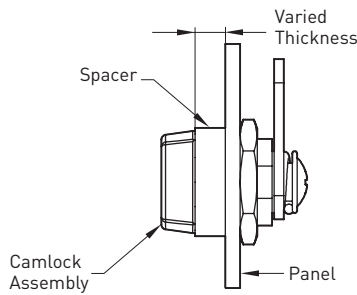
Lock	DIM. A	DIM. B	DIM. C
C-17	26.5	17.0	8.3 max
C-22	31.5	22.0	13.2 max
C-30	38.5	30.0	21.5 max

ACCESSORIES

CAMLOCK SPACER - T/SPAC

FEATURES & SPECIFICATIONS

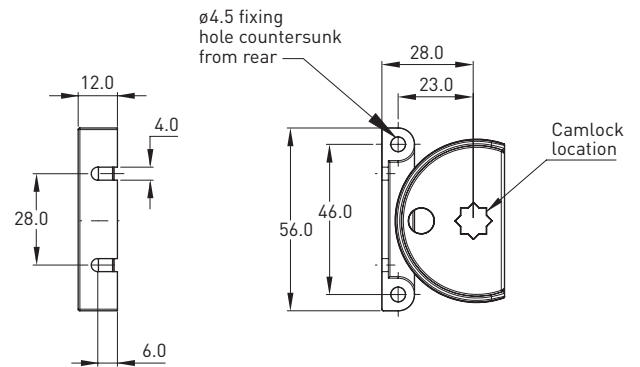
- Used when the position of the lock needs to be brought forward in relation to the mounting panel.
- Outside diameter 22.2mm.
- 1.6mm thick steel tube.
- Available in 3mm, 6mm, 7.5mm and 9mm thickness.



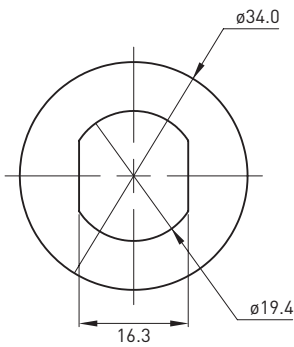
HAMPER / TAMBOUR DOOR LOCK - M/CAM P6 AND M/STRK P6

FEATURES & SPECIFICATIONS

- Ideal for use on overhead hampers.
- Fits into 19.1mm diameter hole.
- Suits panels up to 19mm thick.
- Glass reinforced strike and cam.
- Key removable in locked and unlocked positions.

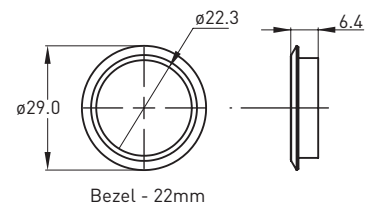
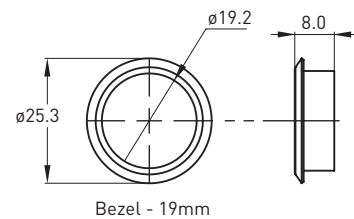


CAMLOCK FLAT WASHER - O/CWFL

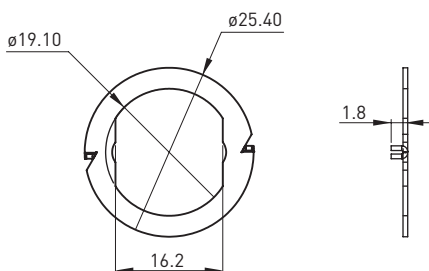


BEZELS

Bezels are designed to fit into the nozzles of our locks. Their main function is to finish off a drilled hole in timber. They come in Nickel colour.



CAMLOCK PRONG WASHER - O/CWPR



Size	Fixing hole
19mm	ø20.0
22mm	ø23.0



DOOR HARDWARE

PUSH LOCKS

Suitable for both timber and aluminium furniture

FEATURES & SPECIFICATIONS

- Zinc alloy die cast housing and pin.
- Key removable in locked and unlocked position.
- Fits in 19mm or 22.1mm diameter hole from rear of a panel.

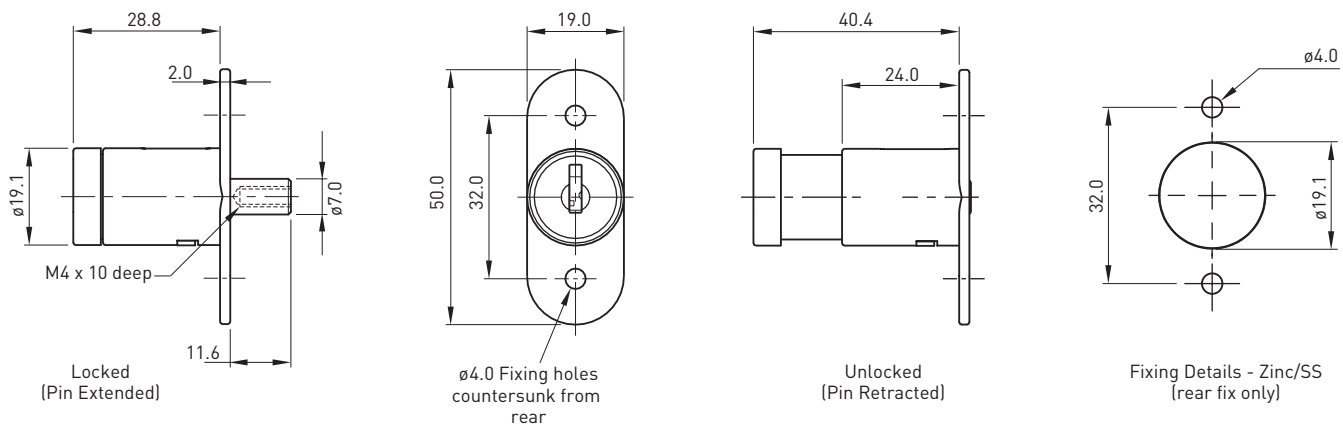


QUICK REFERENCE GUIDE

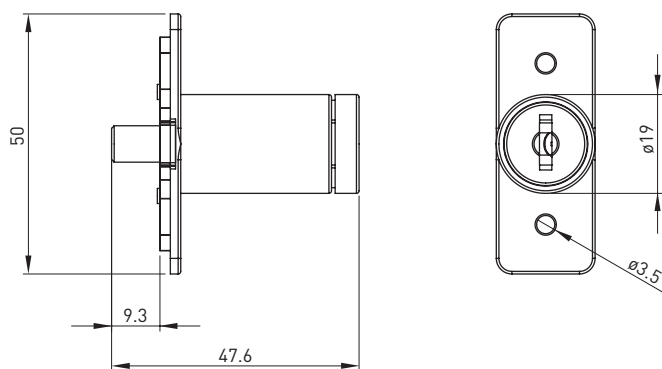
Lock	Key Series	Material	Movement
12mm throw	01, 02, 11, 12, 17, 18, RX, XT,R2	Zinc, S/S	N/A
11mm throw	01, 02	Zinc	S
Pin Projection	01, 02	Zinc	B
PP5 Front/Rear Fix Cover	N/A	Zinc	N/A
PP5 Front Fix Cover - S/S	N/A	S/S	N/A

PUSH LOCKS

12mm throw - Zinc



12mm throw - S/S



12mm throw Zinc*

A/PP5

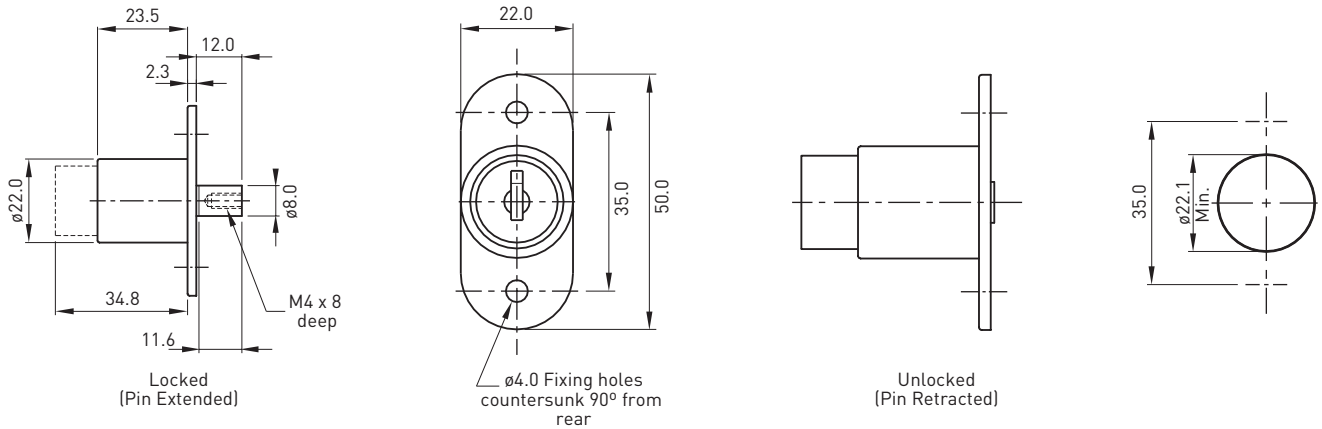
12mm throw S/S*

A/913213

*Available with barrel exchange

PUSH LOCKS

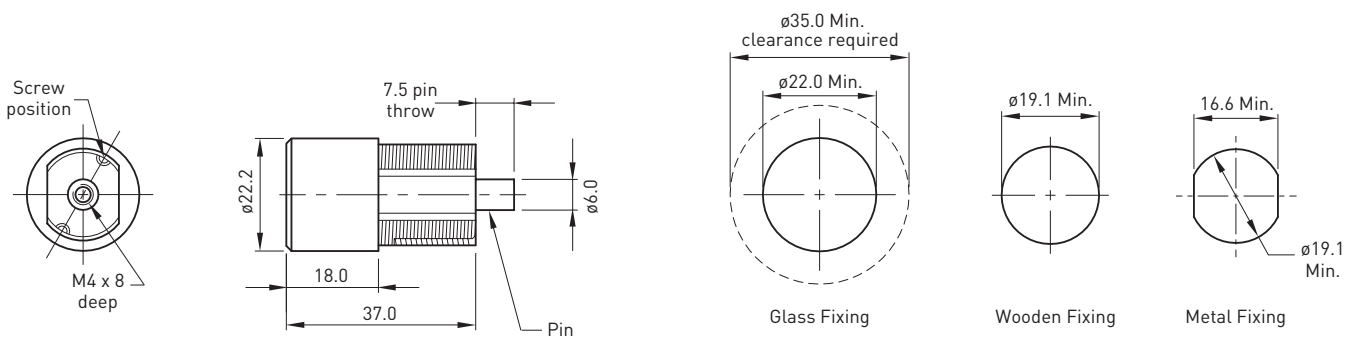
11mm throw



11mm throw

A/PP2

Projection Pin



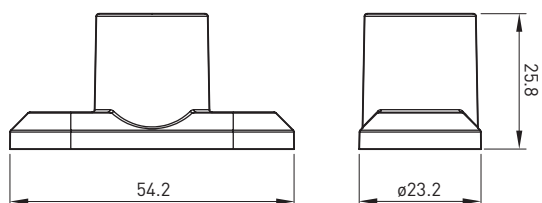
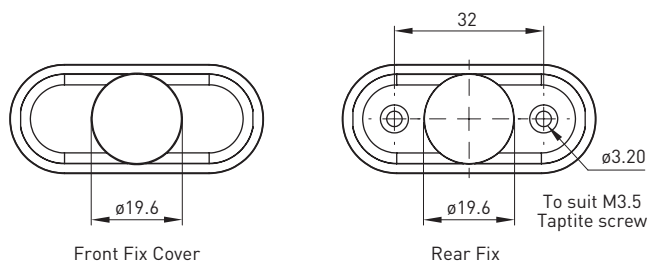
Projection Pin

A/PP1

Material	Fixing Code
Glass thickness 10mm	G3
Glass thickness 8mm	G6
Glass thickness 6mm	G7
Metal	N
Wood	P

PUSH LOCKS

PP5 Front/Rear Fix Cover



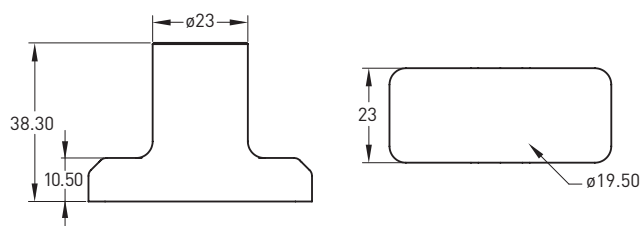
PP5 Front Fix Cover

D/PP5C

PP5 Rear Fix Cover
(Screws available on request)

D/PP5CR

PP5 Front Fix Cover - S/S



PP5 Front Fix Cover

I/PP5C/SS

CYLINDERS

Best suitable for screen doors

FEATURES & SPECIFICATIONS

- Features two locking barrels that operate central locking pawl from either side of the door.
- Zinc alloy diecast housing.
- Bright Chrome finish.
- Accessible from both internally and externally.

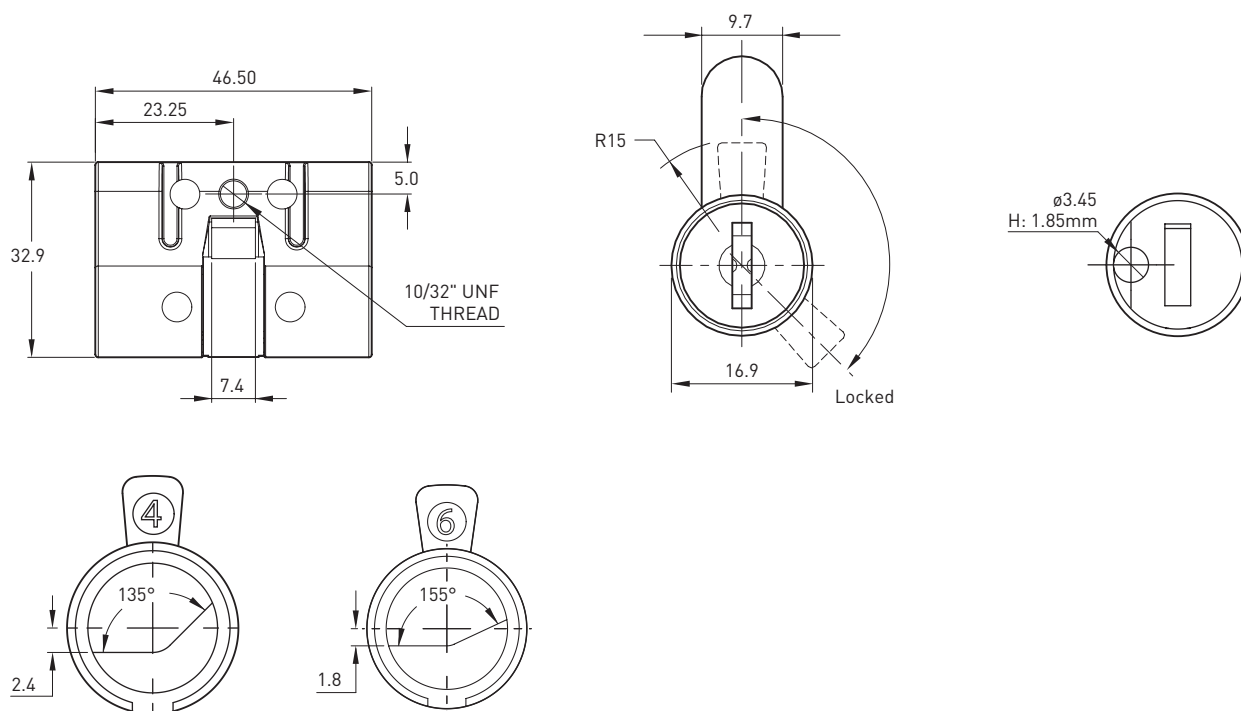


QUICK REFERENCE GUIDE

Lock	Lock Insert / Keying	Access	Pawl / Tongue Rotation
AD4	03, 27	Double sided	135°
AD6	External Access - 27, 28, Snib Internal Access - NL, COM, RES	Double, Single sided	155°
AD7	External Access - 27, 28, Snib Internal Access - NL, COM, RES	Double, Single sided	155°
AD8	External Access - 27, 28, Snib Internal Access - NL, COM, RES	Double, Single sided	360°
AT1-4	27	-	9-12, 12-3, 9-12-3, Fixed

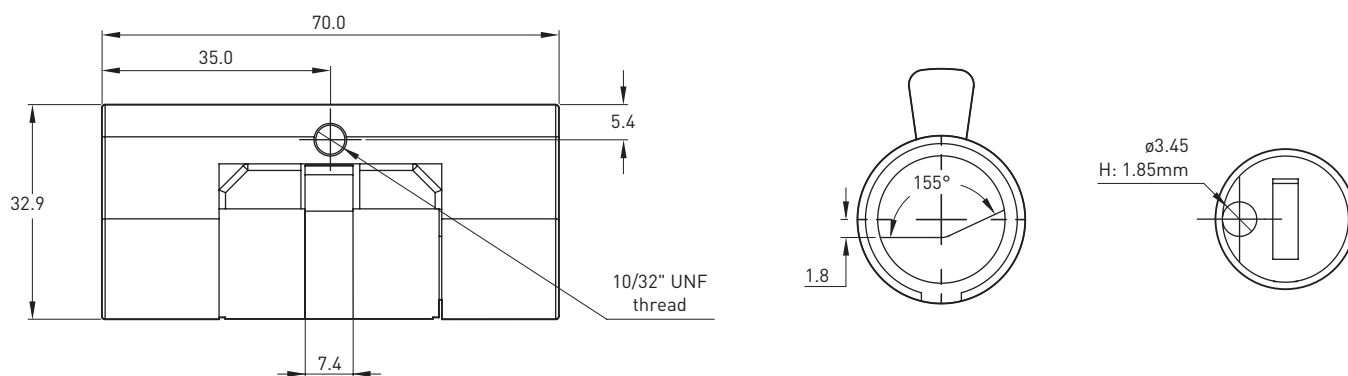
CYLINDERS

AD4 & AD6



AD4	A/AD4
AD6	A/AD6

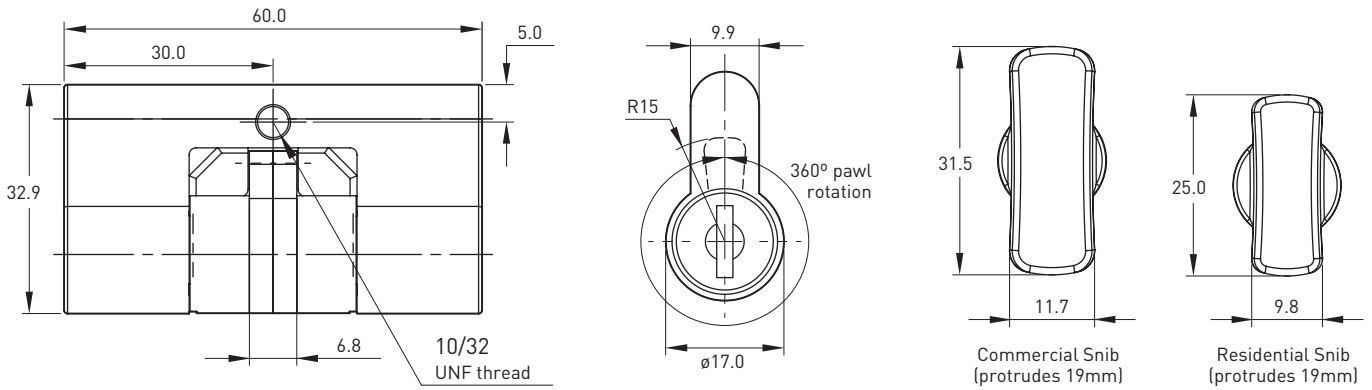
AD7



AD7	A/AD7
-----	-------

CYLINDERS

AD8

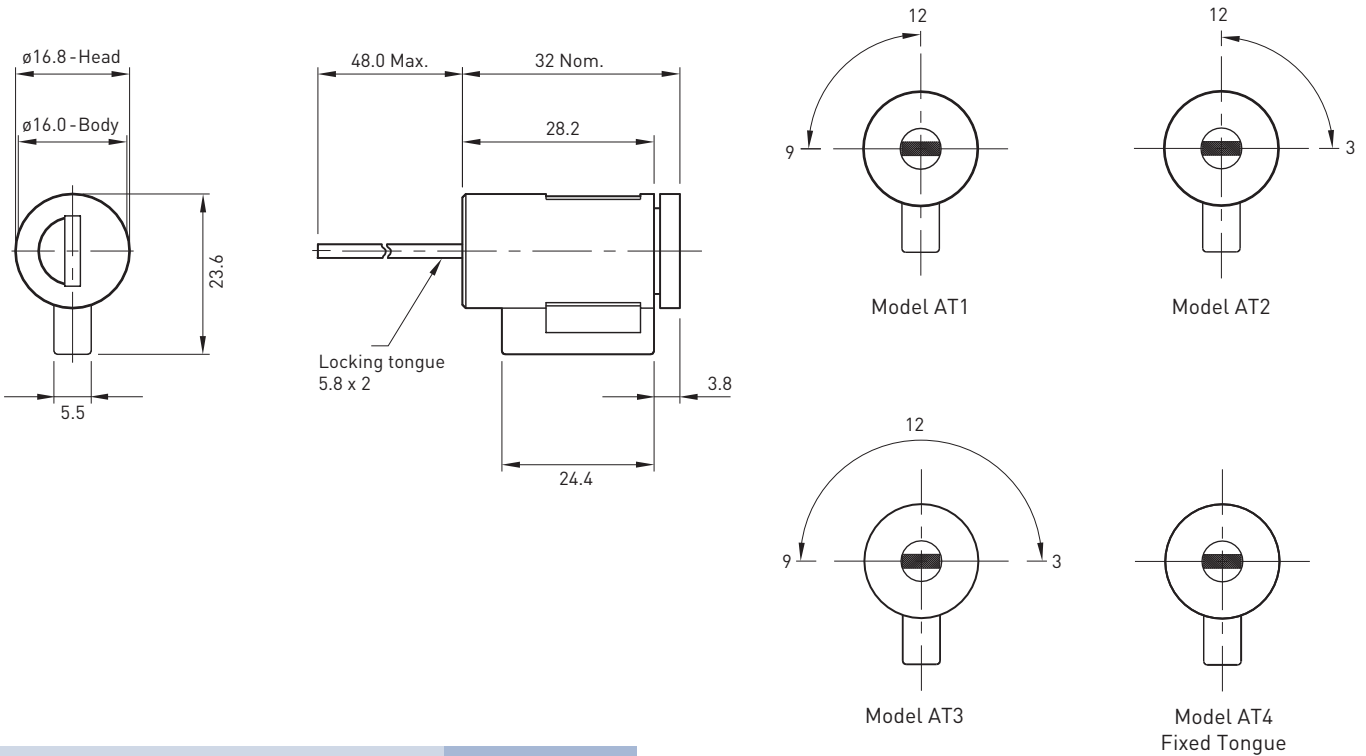


AD8

A/AD8

AT1-4

The cylinders differ by Locking Tongue Free rotation.



AT

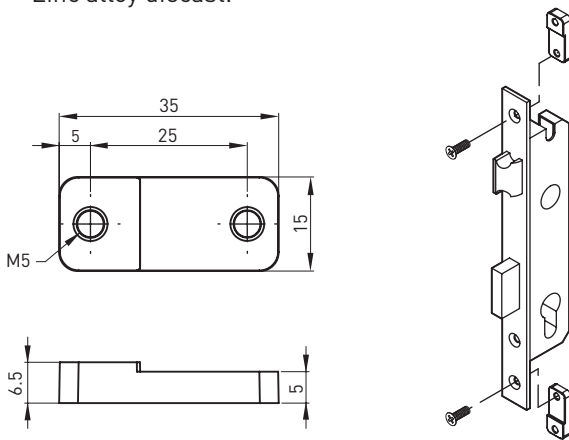
A/AT1-4

ACCESSORIES and MULTI-PURPOSE

FLUSH MOUNTING TABS

FEATURES AND SPECIFICATIONS

- Best suited for aluminium hinged and sliding doors or flush installation of standard mortice lock.
- Supplied as a kit with two plates and fixing screws.
- Designed to suit multiple door thicknesses.
- Zinc alloy diecast.



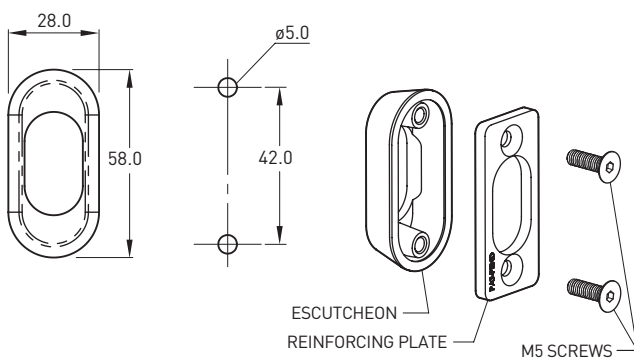
Flush mounting tabs

A/915209

SECURITY CYLINDER TRIM

FEATURES AND SPECIFICATIONS

- A heavy duty trim for security cylinders where the cylinder protrudes beyond the face of the door.
- Zinc diecast escutcheon and reinforcing plate.



Security Cylinder Trim

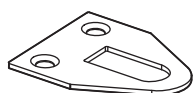
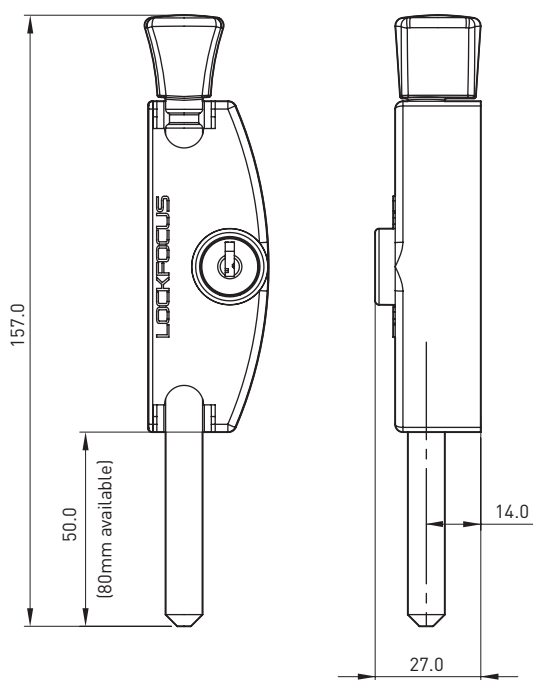
A/TRIM

ACCESSORIES and MULTI-PURPOSE

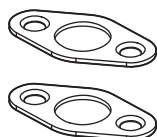
PATIO BOLT

FEATURES AND SPECIFICATIONS

- Best suited for aluminium and timber sliding or hinged doors.
- 10mm S/S locking bolt available in 50mm (standard) and 80mm (extended) length.
- Zinc diecast body available in black or white.
- Reversible design allows for left or right hand mounting.
- Compatible with standard barrels, Lock Focus universal C4 barrel, and one key solution.



Keeper
(hinged doors)



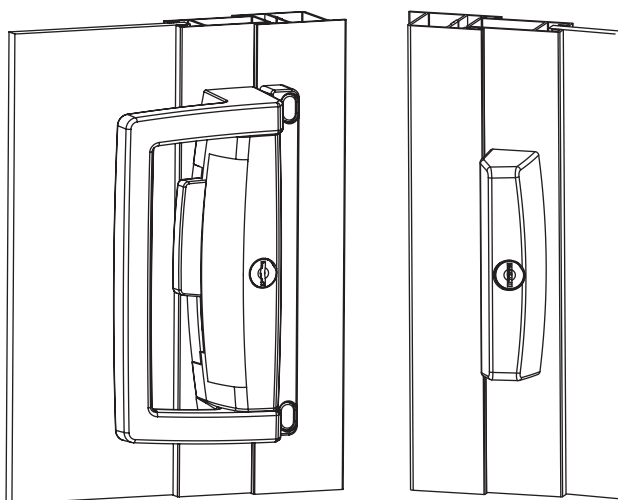
Ferrules
(sliding doors,
x2 for venting)

ACCESSORIES and MULTI-PURPOSE

EUCLID200

FEATURES AND SPECIFICATIONS

- Twin 6mm locking hooks.
- Surface mounted (concealed screw fixing).
- Spacers allow for adjustment of lock body.
- Large D handle for ease of opening sliding doors.
- Internal latch slide for easy latching.
- Anti-slam pin prevents damage of locking hooks.
- Non-handed design.
- Solid diecast zinc construction.
- Available in matt black.
- Available in 27 series and C4 with locking and non-locking external handle.



Euclid200

A/915121

NOTES



GARAGE ROLLER DOOR LOCKS

GARAGE ROLLER DOOR LOCKS

The Lock Focus garage roller door lock range has a spread of capabilities that enable different retrofit abilities, low profile features, pin cylinder options and the addition of a grip recess.

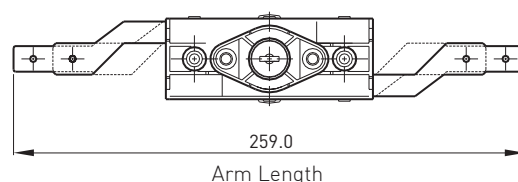
FEATURES & SPECIFICATIONS

- Locking arms have a 19mm stroke on all roller door products.
- Zinc diecast body and fascia with galvanised steel arms (except V7).
- The V7 roller door lock is a cost effective solution with engineering plastic housing and galvanised steel arms.
- Key removable in horizontal position only, this allows for the operation of an internal override.
- V2, V9, V9C4 & V9LP product ranges can be configured with an internal deadlocking feature (i.e. cannot be opened from the inside).



ARM LENGTHS

STD	259mm
EXT	336mm
EXTV5	357mm



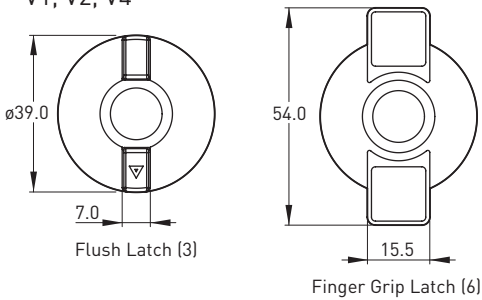
QUICK REFERENCE GUIDE

Roller Door Lock	Fascia	Key Series	Internal Latch	Arm Options
V1	Y	19	Flush, Finger Grip	STD
V2	N	19, 20	Flush, Finger Grip, Key	STD, EXT
V3 8mm Square	T Handle	N/A	N/A	STD
V4	Y	19	Flush, Finger Grip	STD, EXT
V5	Y	19	Plastic Dial	EXTV5
V7	N	19, 23, 25, CL	Plastic Dial, With/Without Hole	STD, EXT
V9	N	23, 25, CL	Plastic Dial, Metal Grip	STD, EXT
V9C4 + V9LP	Y	5-Pin LF 001 or Bi Lock	Standard Metal Grip	STD

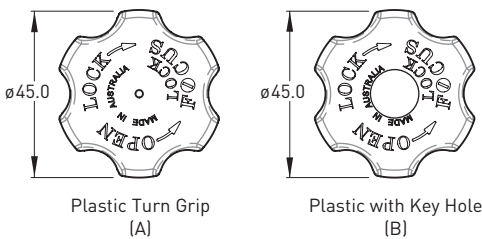
GARAGE ROLLER DOOR LOCKS

INTERNAL LATCH OVERRIDE

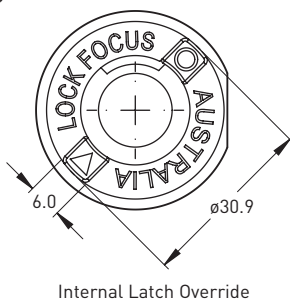
- Flush latch and finger grip latch available on V1, V2, V4



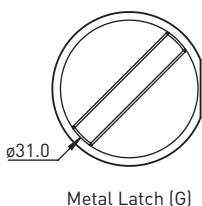
- Plastic turn grip A & B available on V5, V7, V9



- Free latching/dead locking internal latch available on V9C4, V9LP

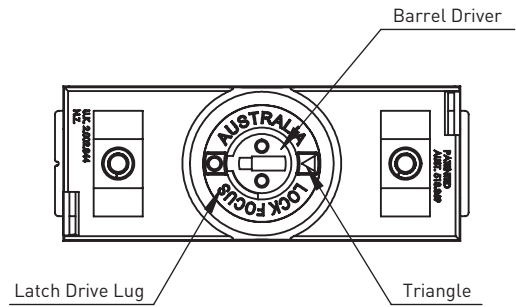


- Alternative latch on V9

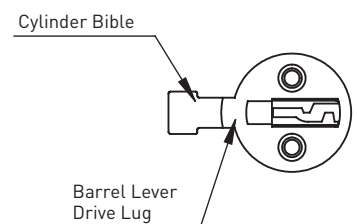
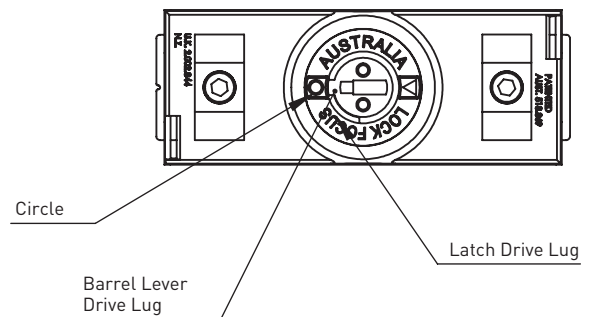


V9C4 & V9LP FREELATCH VS DEADLOCKING

FREE LATCHING FUNCTION

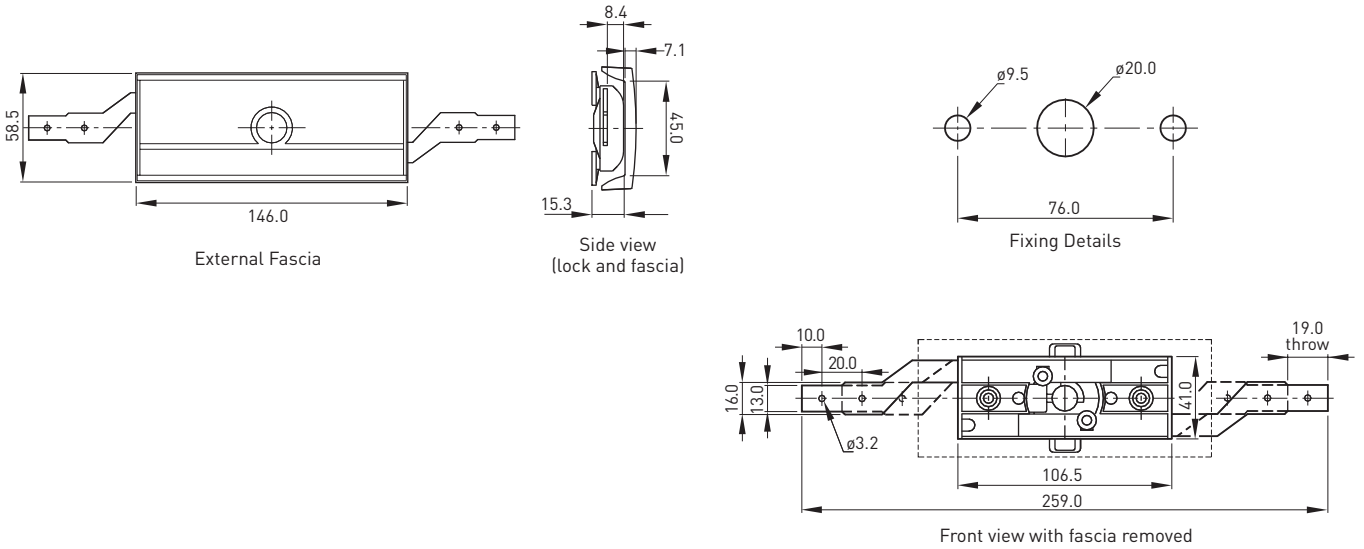


DEADLOCKING FUNCTION



GARAGE ROLLER DOOR LOCKS

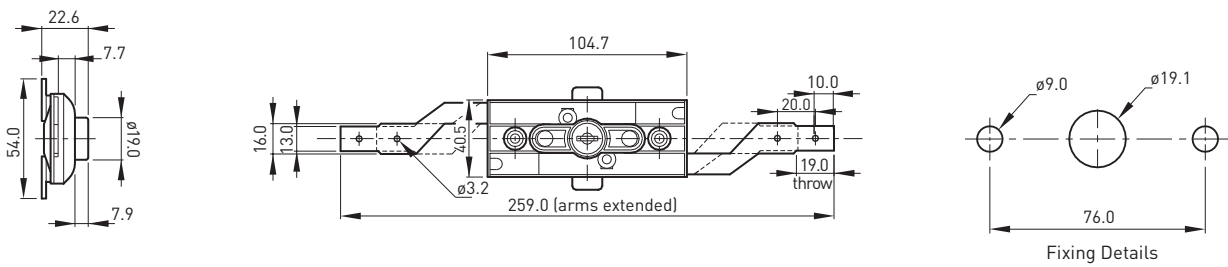
V1



V1

A/V1PB

V2

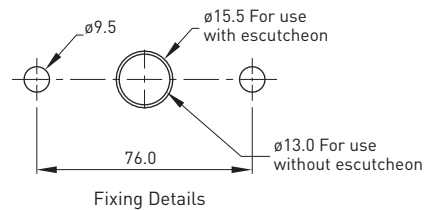
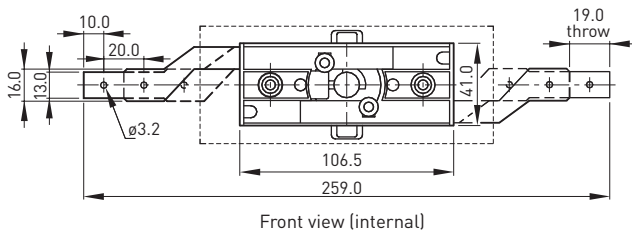


V2

A/V2

GARAGE ROLLER DOOR LOCKS

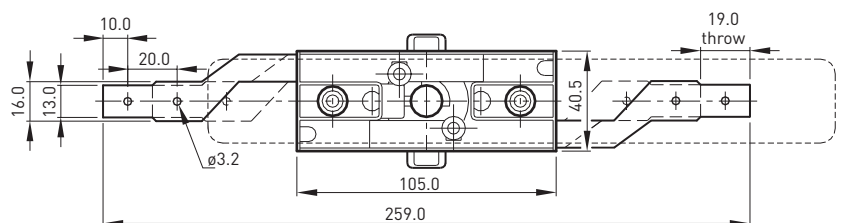
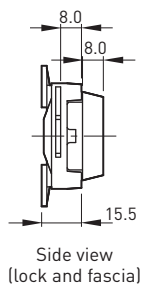
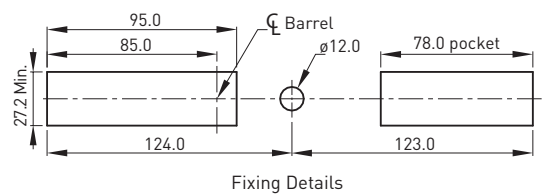
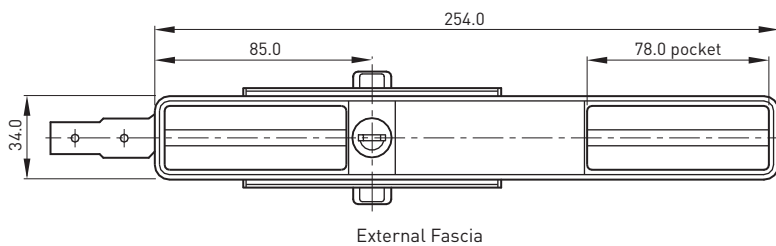
V3



V3

A/V3

V4

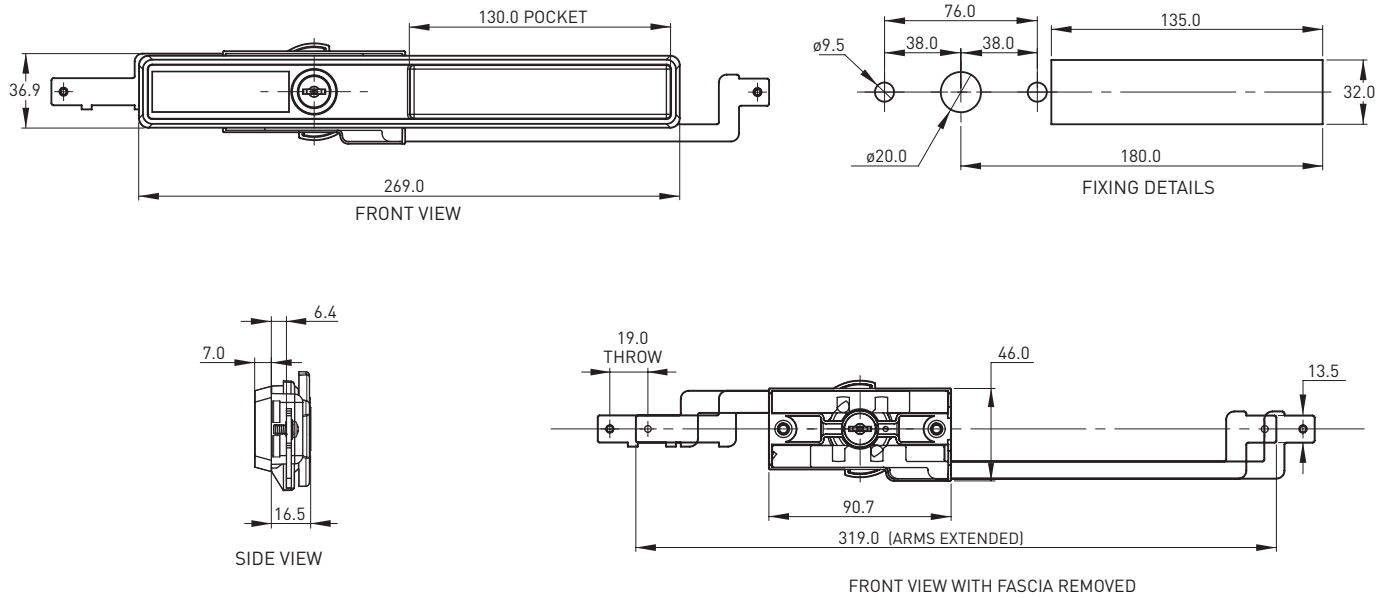


V4

A/V4

GARAGE ROLLER DOOR LOCKS

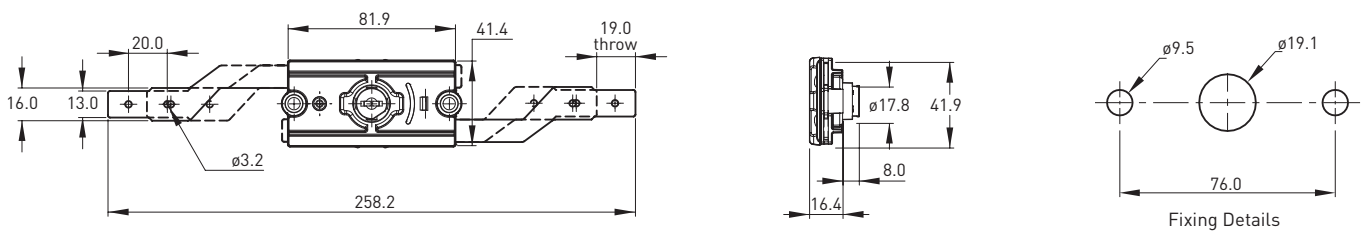
V5



V5

A/V5

V7

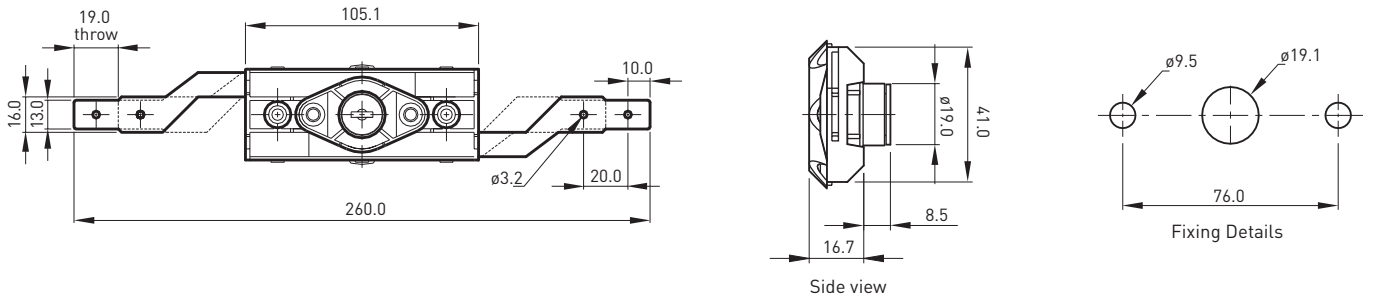


V7

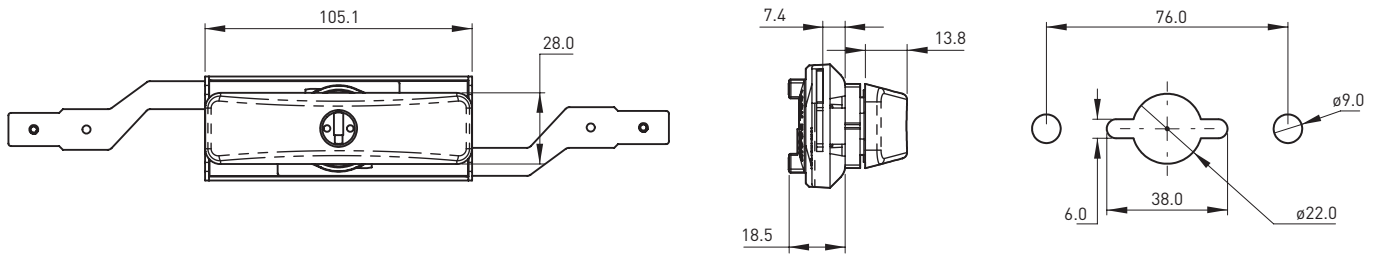
A/V7

GARAGE ROLLER DOOR LOCKS

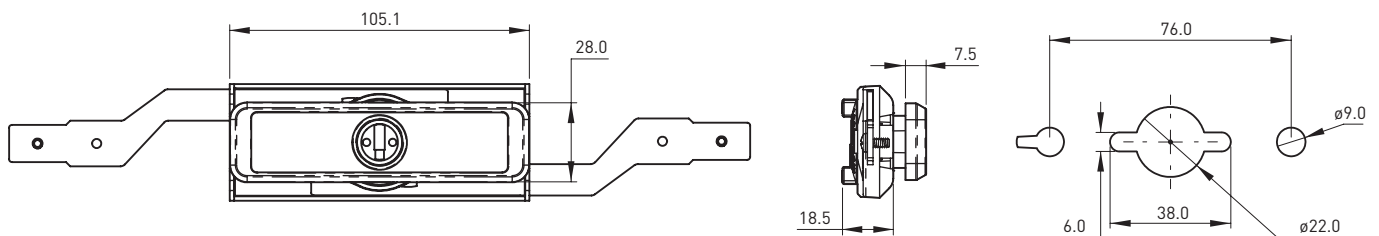
V9



V9C4



V9LP



V9	A/V9
V9C4	A/V9C4
V9LP	A/V9LP

NOTES

Lined writing area consisting of two columns of horizontal lines.



HANDLES

FLUSH HANDLES

Suited for sheetmetal doors requiring 3-point locking (0.6-1.8mm sheet thickness)

FEATURES & SPECIFICATIONS

- Locking consists of flush pan with inset rotational handle grip or pad-lockable.
- Handle grip rotates 90° to lock/unlock 3 point locking cam and rods.
- Plastic pans snap fit into cut-out, metal pans use retention clip to resist tampering.
- Pan available in plastic or zinc diecast.
- Handle grip constructed from engineered plastic for flush locking and diecast zinc for pad lockable version.
- Pad lockable lock suits padlocks up to 7mm shackle.
- The cam can be mounted on left or right edge.
- Standard keying, barrel exchange, and C4 keying available.
- For Cam options refer to P. 86.



QUICK REFERENCE GUIDE

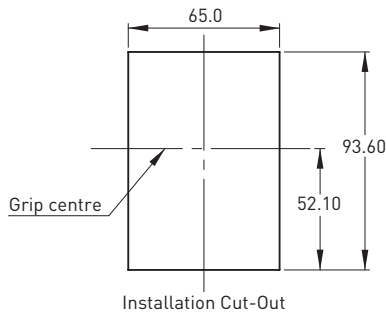
Lock	Key Series	Colour	Cam
Plastic Pan	NL, 01, 02, 11, 12, 17, 18, CL	Black	F1, F2, F3
Metal Pan*	NL, 01, 02, 17, 18, R2, RE, RX, XT	Black Silver	F1, F2, F3
C4 Metal Pan	KA, KD	Black	F1, F3
Pad Lockable	N/A	Black	F1, F2

*Available with barrel exchange

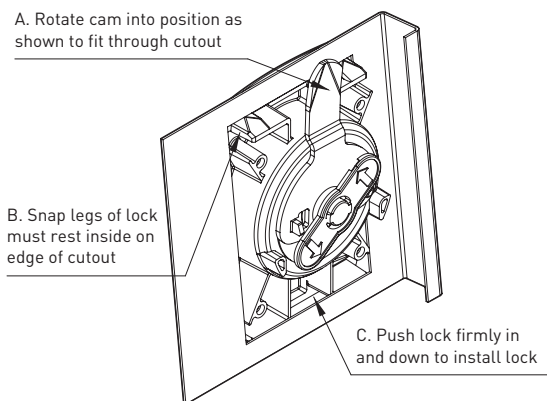
FLUSH HANDLES

INSTALLATION INSTRUCTIONS

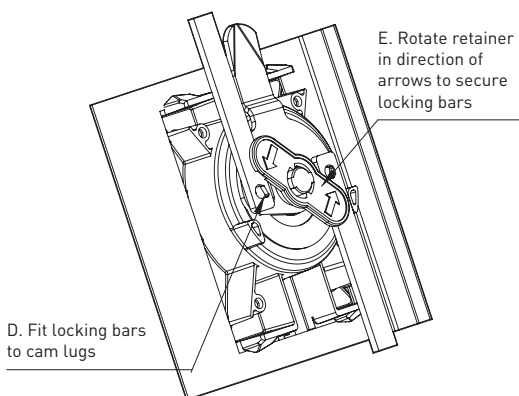
- For vertical mounting locking and non-locking versions.
- For right and left door edge mounting (left edge shown here).



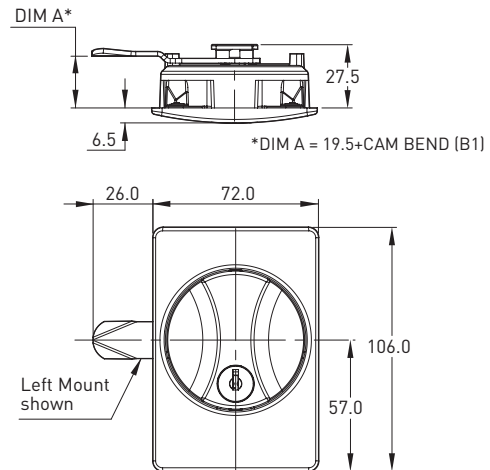
1. Snap Fit Lock In Door (internal view)



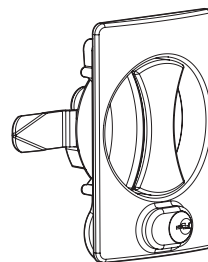
2. Fit Locking Bars (internal view)



Plastic/Metal Pan



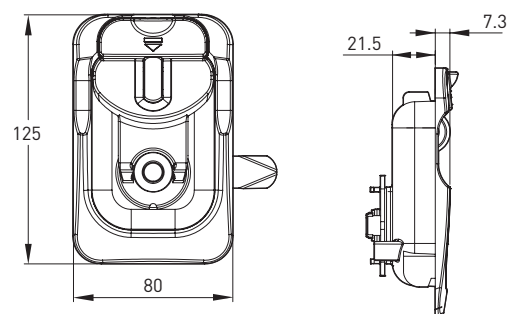
C4 Pan



Plastic Pan	A/HF1
Metal Pan*	A/HF2
C4 Pan	A/HFC4

*Available with barrel exchange

Pad Lockable - Heavy Duty Latch Lock



Pad Lockable	I/HDLL
--------------	--------

SWING HANDLES

Best suited for sheet metal furniture of various thicknesses

FEATURES & SPECIFICATIONS

- 8mm square drive spindle available in standard length and with extension adaptors.

For swing handles suitable for sheet up to 3mm thick:

- Spring loaded handle indicates when unlocked.
- Changeable locking inserts.
- Suits large range of cam types - flat, bent and 3-point cams.
- IP66 rating.

For swing handles suitable for sheet up to 10mm thick:

- Extended spindle allows for adjustable cam types and is suitable for 3-point mechanisms.
- 3 padlocking handles available suitable with padlock with up to 13mm thick.



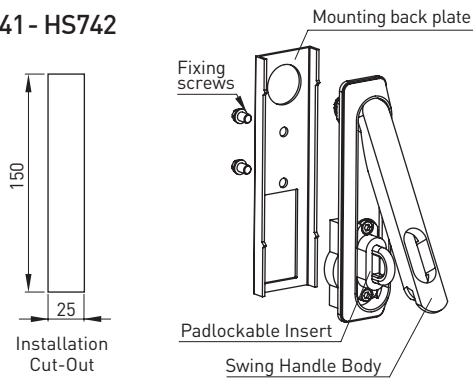
QUICK REFERENCE GUIDE

LOCK	LOCK INSERT/ KEYING	MATERIAL	FINISH	HANDLE ROTATION
HS741	Wafer, CL, C4, ETSA	Zinc diecast S/S	Black Chrome	90° rotatable handle
HS742	BiLock	Zinc diecast S/S	Black Chrome	90° rotatable handle
HS743	Padlockable	Zinc diecast S/S	Black Chrome	90° rotatable handle
HS744	ASSA Compatible	Zinc diecast	Black Chrome	90° rotatable handle
F736/F737	Padlockable	Zinc diecast	Chrome	360° rotatable handle
F738	CL001, L003, ETSA	Zinc diecast	Chrome	360° rotatable handle
HSS	Padlockable	S/S		360° rotatable handle

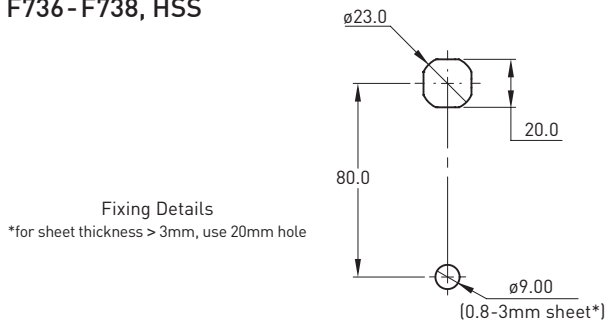
SWING HANDLES

INSTALLATION INSTRUCTIONS

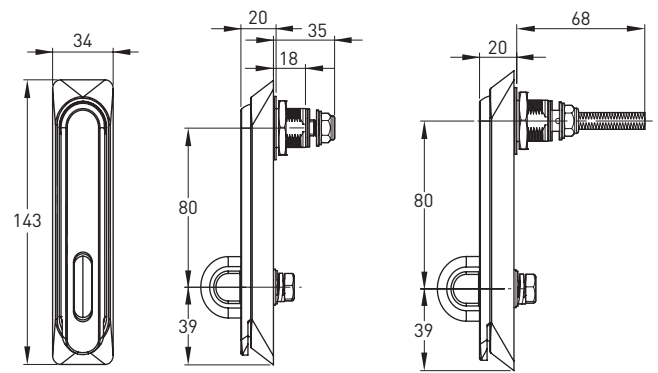
HS741 - HS742



F736 - F738, HSS



F736 - F737

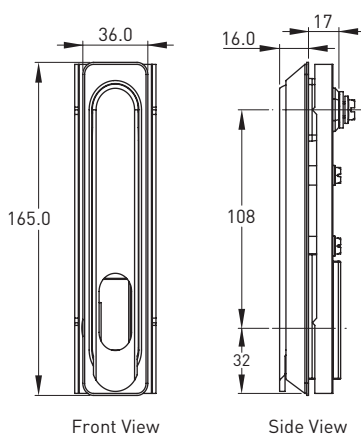


Short Spindle - F736/HSS-/3A

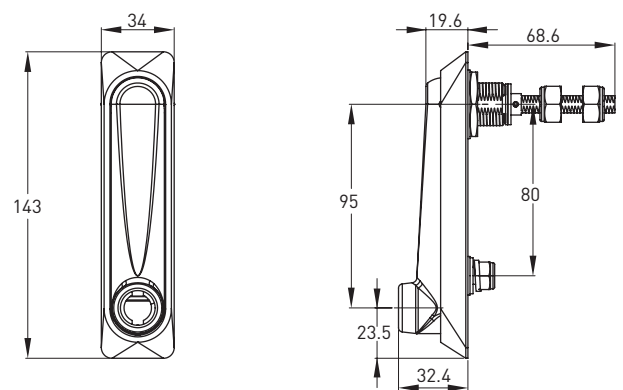
Extended Spindle - F737/HSS-/2A

F736	I/F736
F737	I/F737
HSS Extended Spindle	I/HSS-/2A
HSS Short Spindle	I/HSS-/3A

HS741-HS744



F738



F738	I/F738
------	--------

HS741	A/IF741
HS742	A/IF742
HS743	A/IF743
HS744	A/IF744

T & L HANDLES

The Lock Focus T&L Handle range is suitable for use on garage and shed doors, also sheet metal furniture.

FEATURES & SPECIFICATIONS

- Key locking handle with 8mm square drive for operation of locking cam.
- Rear fix option (R) mounted tapped holes concealed underneath rose.
- Front fix option (F) fitted from front of the rose.
- Diecast zinc handle and rose.
- Bright Chrome finish.
- 90 or 180 degree movement available. See P. 92.
- Available with spindles and cams. For cams see P. 86.
- The padlocking version suits shackles up to 9.5mm diameter.



QUICK REFERENCE GUIDE

HANDLE	KEY SERIES	MOVEMENT
Large T Handle	--, 01, 02, 11, 12, CL, FS, ES	BSAC
Small T Handle	01, 02, 11, 12, CL, FS	BSAC
Lever Handle	--, 01, 02, 11, 12, CL, FS	BSAC
Lever Handle - Padlocking	01, 02, 11, 12, CL, FS	SA
Lever Handle - Keyable/ Padlocking	01, 02, 11, 12, CL, FS	SA
Lever Handle - Pin Cylinder	KA, KD	B
T Handle - Pin Cylinder	KA, KD	B

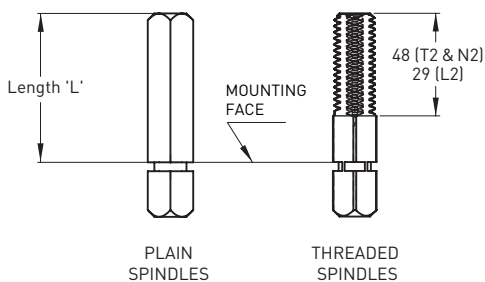
T & L HANDLES

ASSEMBLY INSTRUCTIONS

1. Assemble handle to rose and rotate clockwise over 1/4 turn.
2. Assemble detent bush locating over lug on handle shaft.
3. Assemble spindle to retainer plate by inserting into centre hole and moving spindle sideways to locate in groove.
4. Assemble retainer plate/spindle to handle/rose by inserting spindle into square hole in detent bush and locating retainer plate in rose, with location hole aligned with boss.
5. Insert screw into one of the three holes to suit movement required (A, B, or C/S) and tighten a maximum torque of 1.0Nm.
6. Check function and assemble barrel to handle as required.

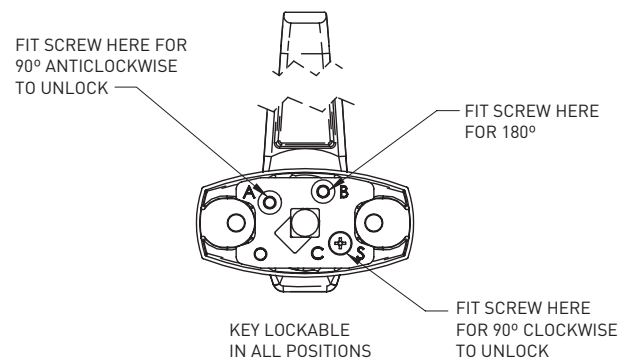
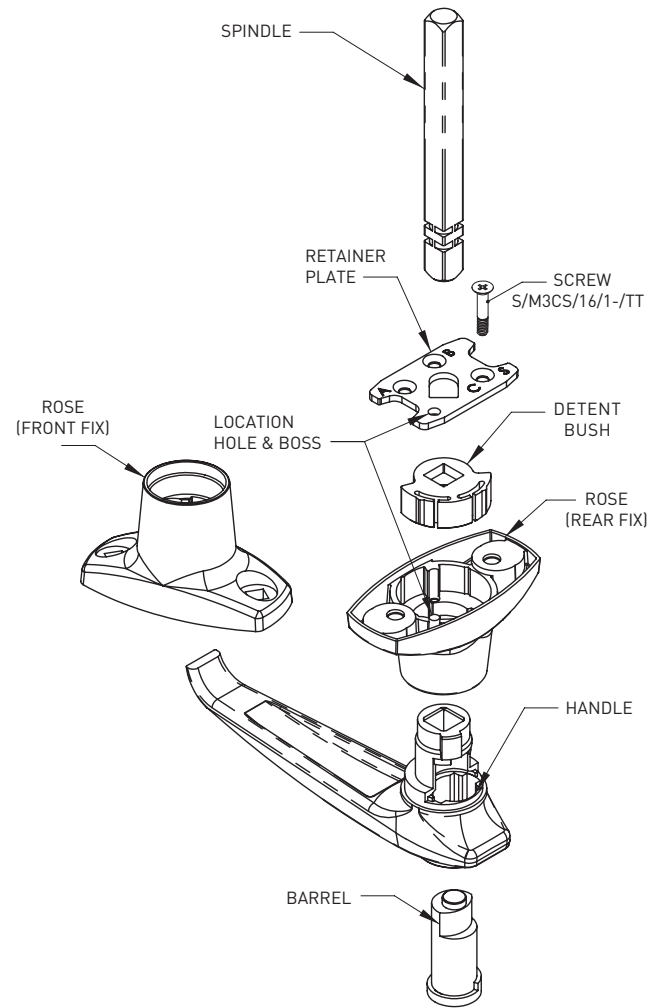
SPINDLES

TYPE CODE	LENGTH	PLAIN	THREADED
B	32mm	T/SPIN/B2	
L	32mm		T/SPIN/L2
M	40mm	T/SPIN/M2	
C	44mm	T/SPIN/C2	
D	50mm	T/SPIN/D2	
T	50mm		T/SPIN/T2
N	62mm		T/SPIN/N2
E	75mm	T/SPIN/E2	
H	100mm	T/SPIN/H2	
F	136mm	T/SPIN/P2	



ASSEMBLY

- Assembly applies to T and L handles



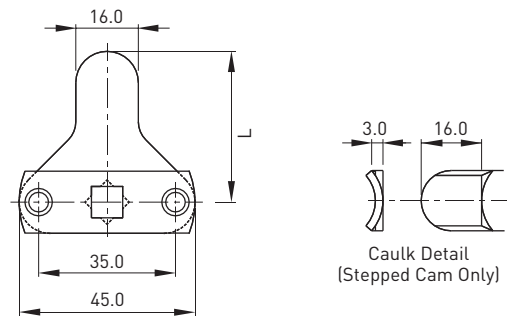
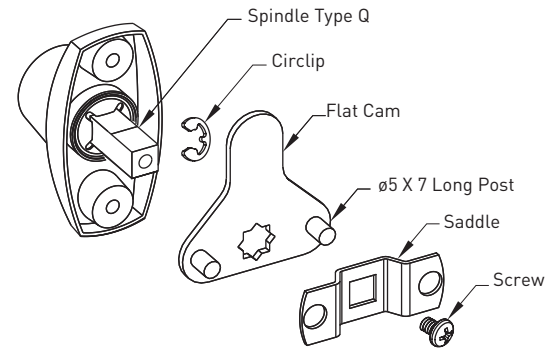
T & L HANDLES

CAMS, SPINDLES AND ROTATION

3-POINT LOCKING CAMS

- Designed to be used with spindle type Q (see image for details).
- Cams available in flat or stepped. See table below for dimensional options.
- Designed to be used with locking rods when required. To do this: remove split pin and take off saddle, fit locking bars, refit split pin and take off saddle, fit locking bars, refit split pin through hole in the spindle, spread pin legs to secure.

TYPE CODE	END DETAIL	DIM L	DIM B (FLAT)	DIM C (STEPPED)
71	FLAT	37	10.0	
72	FLAT	65	10.0	
73	CAULKED	63.5		13.2
74	CAULKED	57.5		19.5
75	CAULKED	54.5		22.7
76	CAULKED	51		26.0

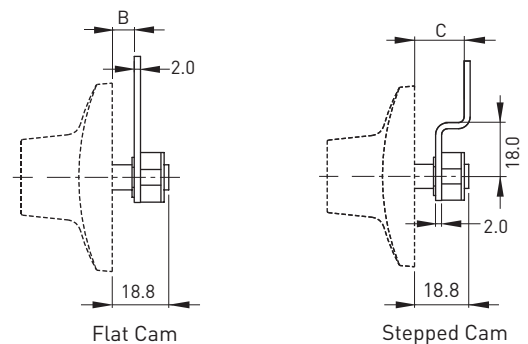


Spindle Type Q and 3-Point Locking Cams

Spindle type Q is designed to be used with a range of 3-point locking cams (refer to table).

The 3-point locking cam has two versions: a flat cam and a stepped cam. The flat cams are spaced at 10mm from the base of the lock. The stepped cams are spaced at 13.2mm to 26mm from the base of the lock, depending on the type.

The 3-point locking cam is designed to be used with locking rods. To fit the locking rods, the saddle must be removed. To do this, remove the split pin and take off the saddle. Fit the locking bars, then refit the saddle. Feed the split pin through the hole in the spindle, then spread the pin legs.



(not to scale, measurements in mm)

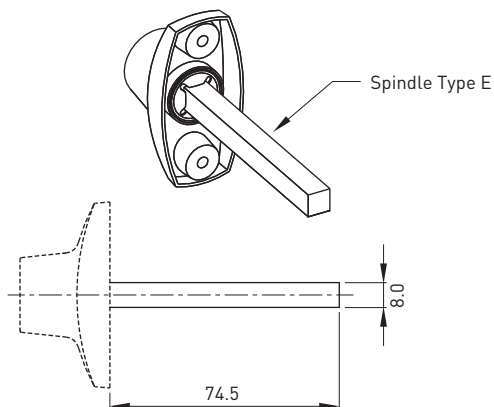
SPINDLE TYPE	CAM TYPE	DIM L	DIM B (FLAT)	DIM C (STEPPED)	END DETAIL
Q	71	37	10.0		FLAT
Q	72	65	10.0		FLAT
Q	73	63.5		13.2	CAULKED
Q	74	57.5		19.5	CAULKED
Q	75	54.5		22.7	CAULKED
Q	76	51		26.0	CAULKED

T & L HANDLES

CAMS, SPINDLES AND MOVEMENT

Spindle Type E

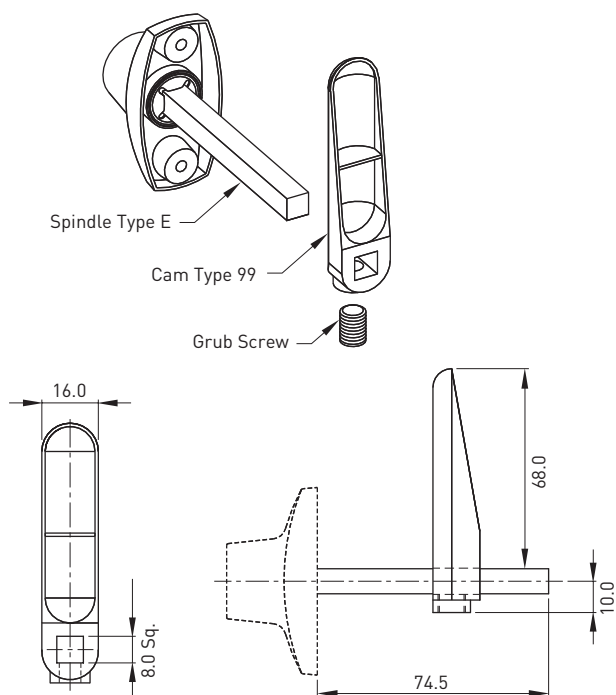
Spindle type E is a standard 8 mm square drive which is 74.5mm long from the base of the lock.



Spindle Type E and Cam Type 99

The cam type 99 is secured to spindle type E by an M8 grub screw.

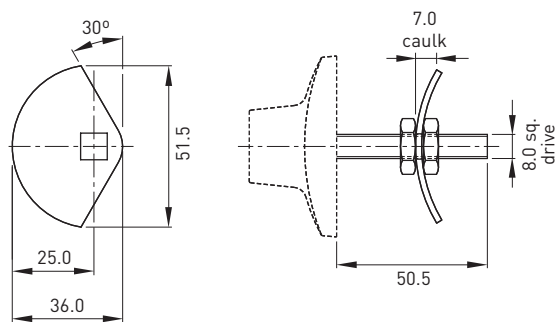
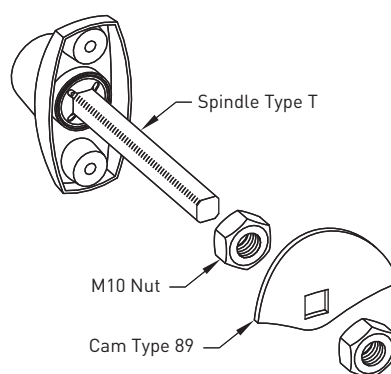
The distance from the base of the rose to the cam can be adjusted by loosening the grub screw and sliding the cam along the spindle.



Spindle Type T and Cam Type 89

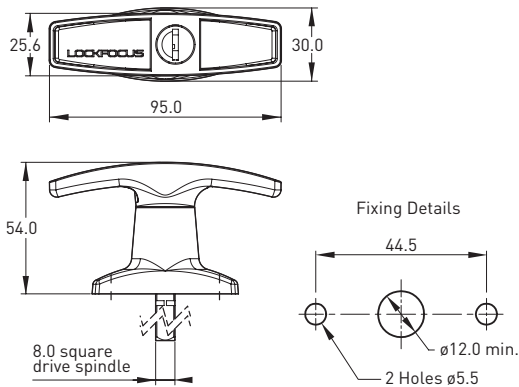
The cam type 89 is fixed to spindle type T by being sandwiched between two M10 nuts.

The distance from the base of the rose to the cam can be adjusted by loosening the nuts and sliding the cam along the spindle.



T & L HANDLES

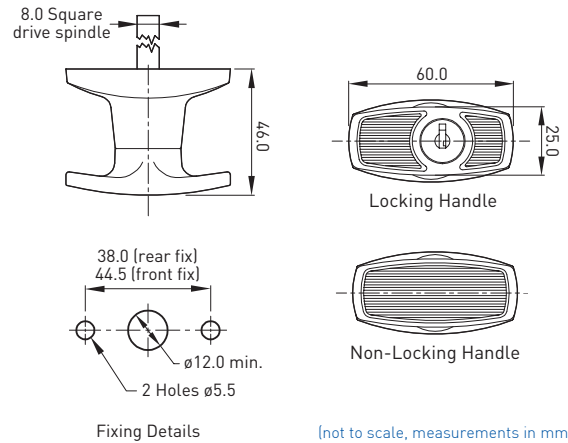
LARGE T HANDLE



(not to scale, measurements in mm)

Large T Handle Front Fix	A/HG-F
Large T Handle Non Locking Front Fix	A/HG-F/--
Large T Handle Rear Fix	A/HG-R
Large T Handle Non Locking Rear Fix	A/HG-R/--

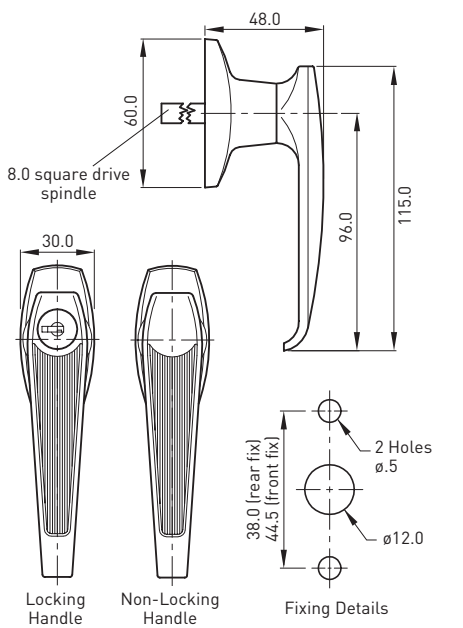
SMALL T HANDLE



(not to scale, measurements in mm)

Small T Handle (Rear fix)	A/HT8R
Small T Handle (Front fix)	A/HT8F

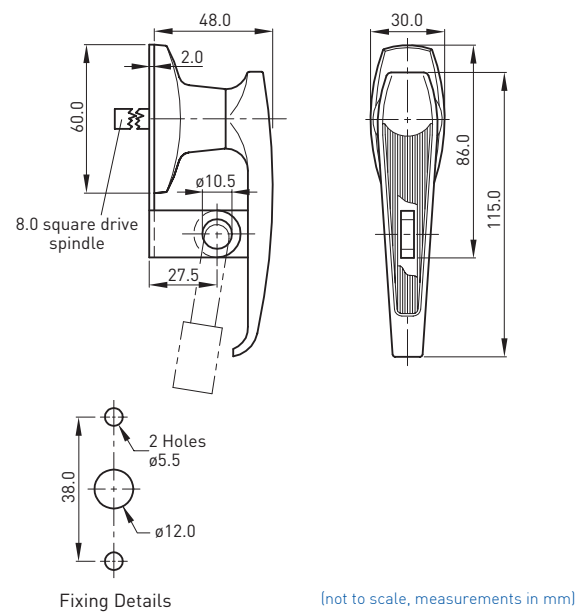
LEVER HANDLES



(not to scale, measurements in mm)

Lever Handle (Rear fix)	A/HL8R
Lever Handle (Front fix)	A/HL8F

LEVER HANDLE PADLOCKING



(not to scale, measurements in mm)

Lever Handle (Rear fix)	A/HL8P
Lever Handle (Padlocking)	A/HLXP

T & L HANDLES - PIN CYLINDER

These handles are used on doors. They are ideal for increased security anywhere an L or T handle is used. Both handles are easily re-keyed to most current restricted systems.

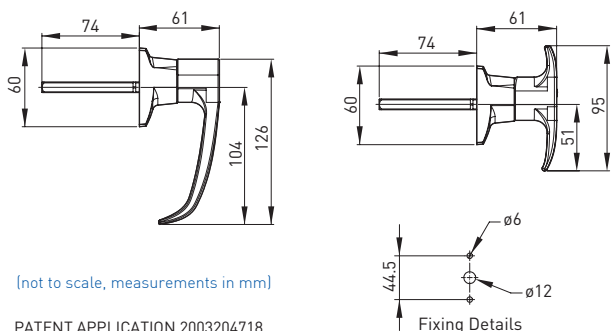
FEATURES & SPECIFICATIONS

- 5-pin brass cylinder.
- 74mm spindle removable and interchangeable with others from our range.
- Zinc alloy diecast handle and rose.
- Chrome-plated finish.
- Fixing from rear only, using M5 screws (not supplied).
- 90° or 180° rotation.
- One pair of keys per lock.

ASSEMBLY INSTRUCTIONS

1. Assemble lock cylinder to handle.
2. Assemble handle to rose and rotate clockwise over 1/4 turn.
3. Assemble detent bush locating over lug on handle shaft.
4. Assemble spindle to retainer plate by inserting into centre hole and moving spindle sideways to locate in groove.
5. Assemble retainer plate/spindle to handle/rose by inserting spindle into square hole in detent bush and locating retainer plate in rose, with location hole aligned with boss.
6. Insert screw into one of the three holes to suit movement required and tighten maximum torque of 1.0Nm.

T & L HANDLES - PIN CYLINDER



L Handle

I/LHAN

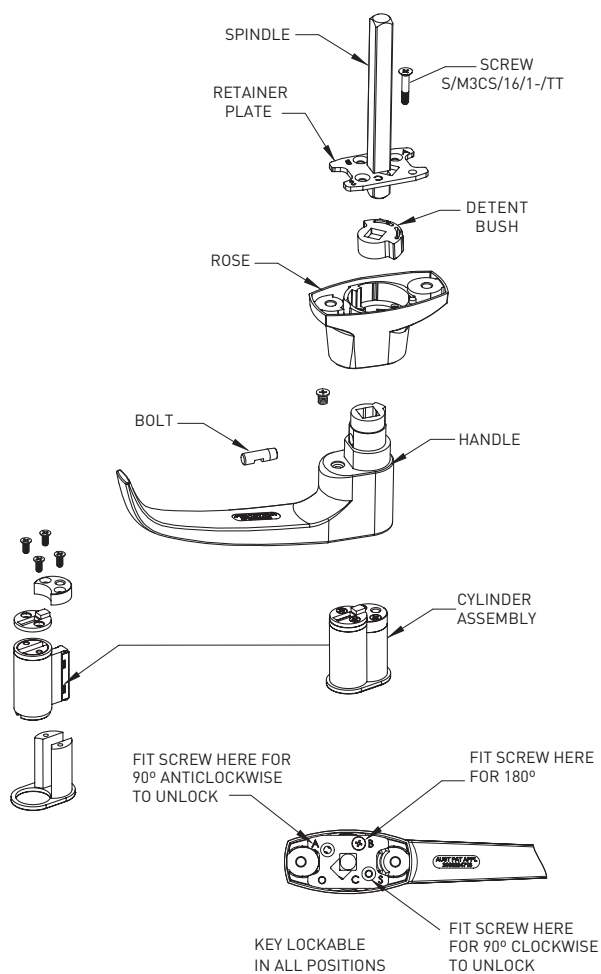
T Handle

I/THAN



ASSEMBLY

- Assembly applies to T and L handles



PATENT APPLICATION 2003204718

COMPRESSION LATCH

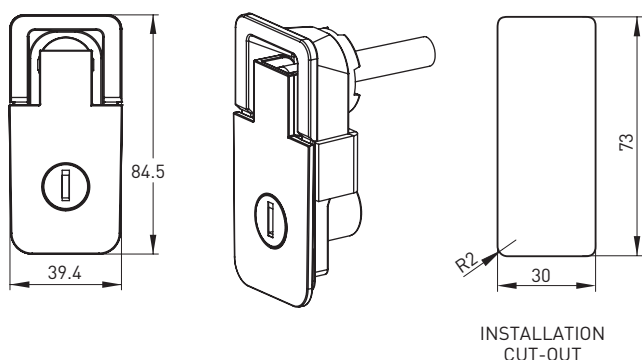
COMPRESSION LATCH

FEATURES AND SPECIFICATIONS

- Applicable mainly for Caravans, RVs, and Utes.
- Flush fitting.
- Compression action for sealing against harsh weather conditions.
- Ergonomic handle for easy use.
- Main body constructed from Zinc alloy diecast.
- Available in bright chrome, satin chrome, white or black.
- Installation cut-out dimensions designed to suit a large range of existing compression latch products.
- Available for purchase as locking version with wafer exchange barrel keyed to 18 series or non locking version.



INSTALLATION CUT OUT



Compression Latch

A/914222



LOCKTECH

ASSET MANAGEMENT SYSTEM

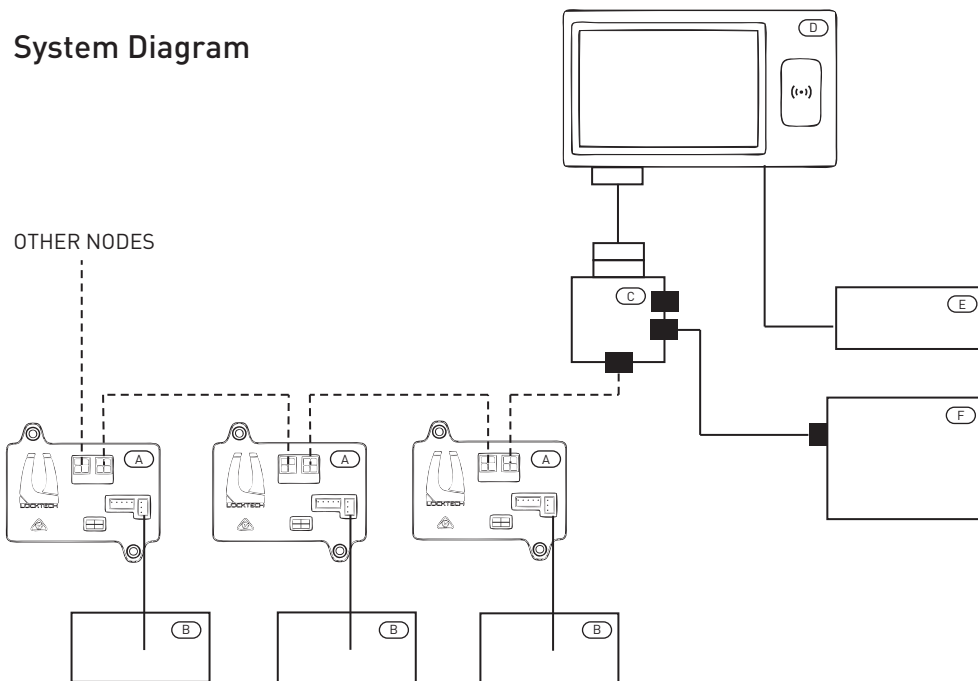
A locker system suitable for small and large scale applications.

FEATURES AND SPECIFICATIONS

- Flexible system designed for today's activity based environment.
- Hardware and software solution for managing access to personal storage.
- Core components include: Kiosk with RFID reader, Node enclosure with USB charger and light, latch with key override.
- Software key features: expandable system that allows to add storage units, access to logs, easy management through local network.
- Local design allows User interface customisation to corporate colour scheme.

For more detailed information, please contact sales or customer service.

System Diagram



* All Cables Supplied with the System

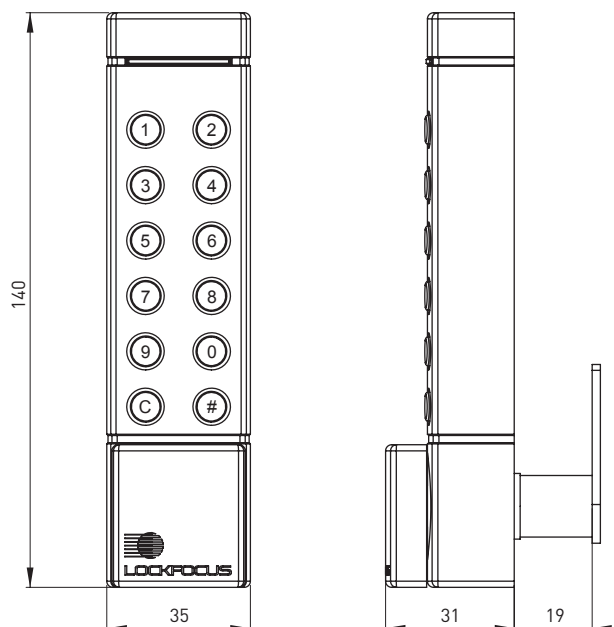
(A) Node	(C) Distributor	(E) Kiosk Power Supply (240V in)
(B) Electronic Latch	(D) Kiosk (7"/15.6")	(F) Power Supply (240V in, 12V out)

ELECTRONIC LOCKS

L200 ELECTRONIC LOCK

FEATURES AND SPECIFICATIONS

- Best suited for cabinets and lockers suitable for metal or timber fixing.
- Digital security for items that require additional protection.
- Single-use code option.
- Up to 30 users with unique access codes.
- Sub master and master programming.
- Codes and settings retained in memory even without batteries.
- External 9V battery back up.
- Concealed key-override behind turn knob (Lock Focus exchange barrel and master key system).
- Product conforms to IP54 (water and dust resistance standard) when installed with the supplied gasket.



L200

A/L200



SPECIAL APPLICATION

SPECIAL APPLICATION

BIN LOCKS

FEATURES AND SPECIFICATIONS

- Applicable for 120L, 240L, 660L and 1100L 'wheelie' bins.
- The product designed to secure the lid in closed position.
- Key is turned 90° to unlock and allow the lid to be opened. Key is held captive in unlocked position (S movement) or key can be removed in both positions (C movement).
- Lid has slam locking action.
- Internal emergency release feature.
- Glass reinforced nylon lock body.
- For movement see P. 92.

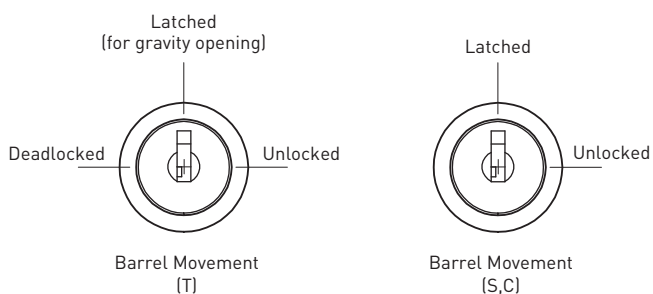


QUICK REFERENCE GUIDE

Bin Lock	Key Series	Operation	Movement
Gravity Lid Lock	01, 02, R3	Gravity, Manual	S C T
Manual Lid Lock	Standard Lock Focus Key Series (except CL)	Fixed, Gravity	S C T

SPECIAL APPLICATION

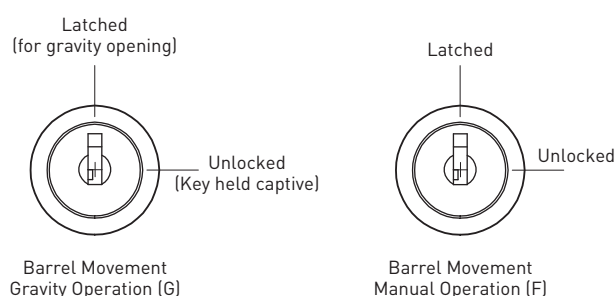
Gravity Grid Lock



Gravity Lid Lock

A/LIDG

Manual Lid Lock



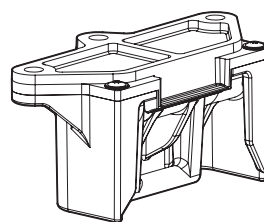
Manual Lid Lock

A/BINP

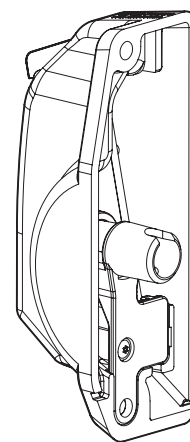
INDUSTRIAL LID LOCK

FEATURES AND SPECIFICATIONS

- Designed to secure industrial waste bins ranging from 1.5M³ front lift to 3.0M³ front lift style container.
- Gravity unlocking with the ability to adjust the opening angle.
- Automatic unlocking when container is being emptied, automatic relocking once back in rest position.
- External manual locking/unlocking using a quarter turn spanner lock key.
- Internal manual emergency release button.
- Suits a variety of lid styles.
- Optional padlocking for added security.



CATCH



HOUSING

Industrial Lid Lock

A/LiD1

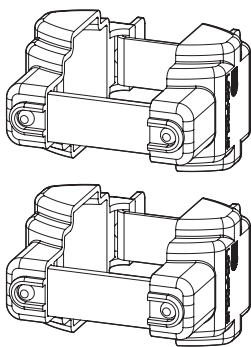
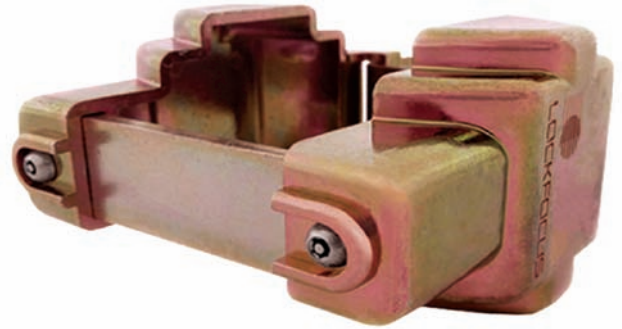
SPECIAL APPLICATION

32MM - 50MM WATER METER LOCKS

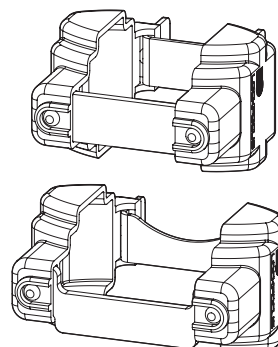
FEATURES AND SPECIFICATIONS

- Applicable for 32mm Itron, 32mm - 50mm Elster water meters.
- Lock cover design suits all sized meters.
- Zinc alloy diecast lock cover with trivalent gold plating.
- Locking flat and bars made from 6mm steel.
- Secured with M6 REX screws.

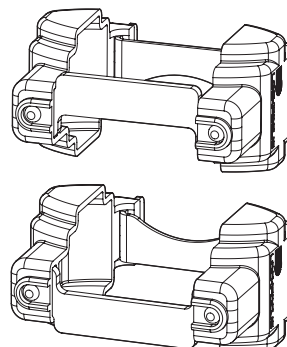
Please note: Purchase dependant on water board approval.



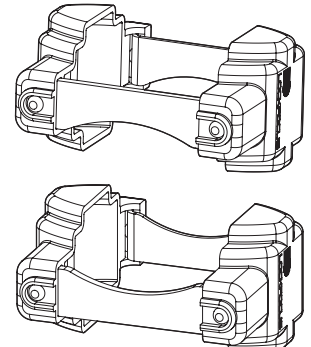
32mm Itron



32mm Elster



40mm Elster



50mm Elster

QUICK REFERENCE GUIDE

Lock	Product Code
32mm Itron, Water Meter Lock	A/913223-100
32mm Elster, Water Meter Lock	A/913223-400
40mm Elster, Water Meter Lock	A/913223-200
50mm Elster, Water Meter Lock	A/913223-300

SPECIAL APPLICATION

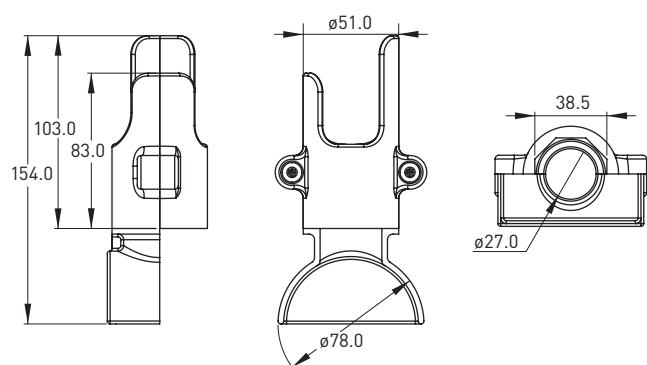
20MM - 25MM WATER METER LOCKS

FEATURES AND SPECIFICATIONS

- Designed to prevent tampering or theft of meters.
- Zic alloy diecast body plated trivalent gold.
- Secured with M6 REX screws, head detail custom shaped to suit restricted drill bit shape.

Please note: Purchase dependant on water board approval.

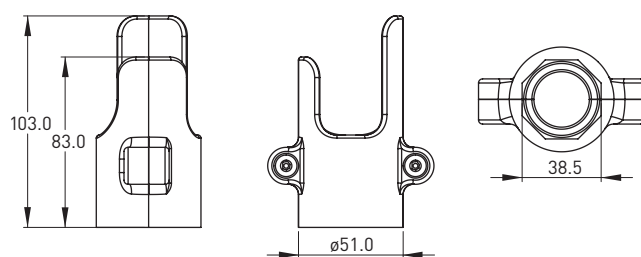
20mm Vertical Water Meter Lock



20mm Vertical Water Meter Lock

A/METER/V

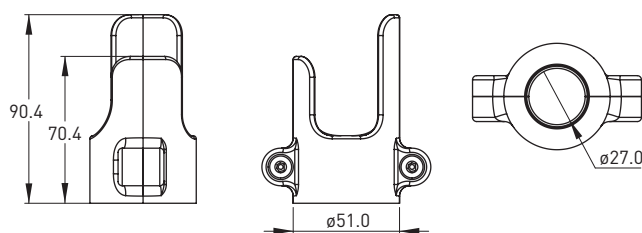
20mm Horizontal Water Meter Lock, Hexagonal



20mm Horizontal Water Meter Lock, Hexagonal

A/METER/H

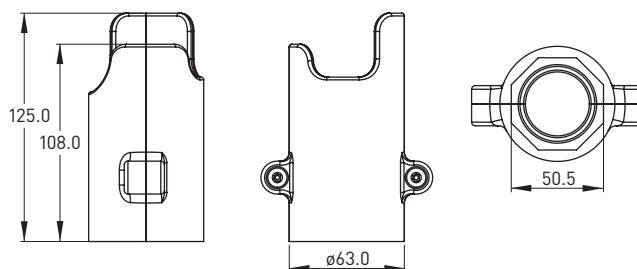
20mm Horizontal Water Meter Lock, Round



20mm Horizontal Water Meter Lock, Round

A/METER/RW

25mm Water Meter Lock



25mm Water Meter Lock

A/METER/25MM

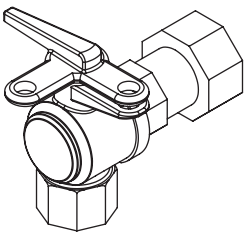
SPECIAL APPLICATION

TAP LOCK

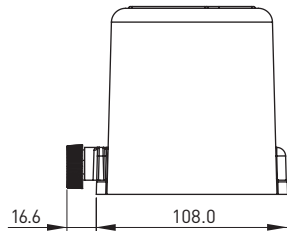
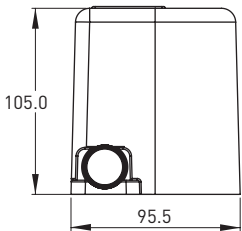
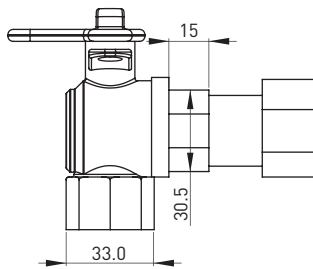


FEATURES AND SPECIFICATIONS

- Suited for water meter taps (see diagram).
- Assembly consists of top and bottom covers with keyed locking bar to secure tap.
- Cover and locking pin are constructed out of glass filled nylon.
- Locking bolt constructed from pressed steel.
- Product to be used in conjunction with 25mm water meter lock to secure meter.
- Available on 27 series wafer barrel that's covered to protect it from weather conditions.



Water Meter Tap



Tap Lock

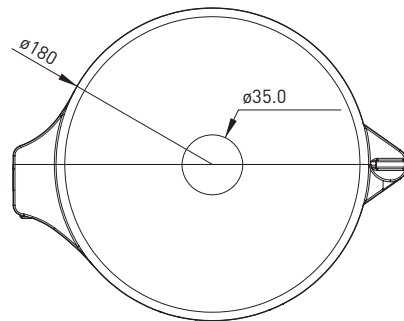
A/TARP

HYDRANT G LOCK



FEATURES AND SPECIFICATIONS

- Suited for exposed hydrants with wheel handle.
- Clamp lock covers wheel handle, preventing access.
- In-built barrel throws steel locking bolt.
- Constructed from polypropylene.
- UV and light stabilizers added to increase product life in exposed areas.
- L003 keying in accordance with fire brigade standard.



Hydrant G Lock

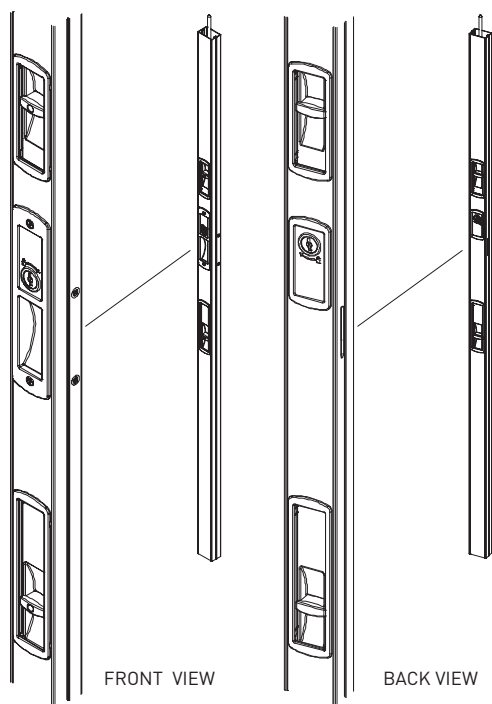
A/913226

SPECIAL APPLICATION

COMMERCIAL BI-FOLD LOCK

FEATURES AND SPECIFICATIONS

- Finger slides are manually operated to control locking rods.
- Key, handle, or snib is turned to release spring loaded rods and unlock the door.
- Lock is available in single (bottom only), double (top and bottom), and three-point locking (top, bottom, and side hook).
- Lock can be operated from either side of door, alternatively a single sided option is available for internal access only.
- Designed to suit extra-large door heights (up to 4.5m).
- Combination of hollow aluminium and solid steel locking rods.
- Engineered nylon slides with diecast zinc locking components.
- Variety of keying options available including but not limited to wafer barrels, C4 barrel, Bi-Lock and more.



Comercial Bi-Fold Lock

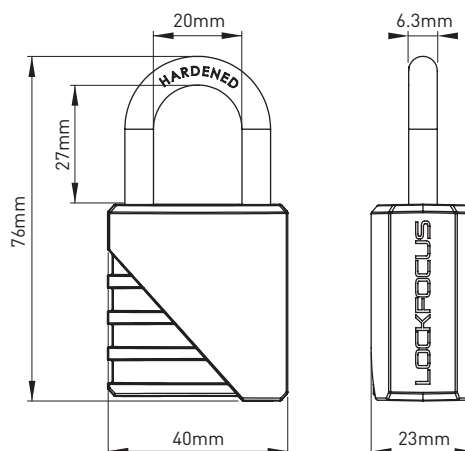
A/915230

PADLOCK



FEATURES AND SPECIFICATIONS

- For commercial, residential and recreational use.
- Offers secure protection with a hardened steel shackle.
- Modern design available in Red powder coat and Chrome finish.
- Customer specific key numbers available, (incl. CFA, MFB, ETSA).
- Zinc alloy diecast main body.
- LF Barrel can be removable, mastered or non mastered.
- Available in Key Series - 02, 12 & 08/18.



Padlock

A/PLP100

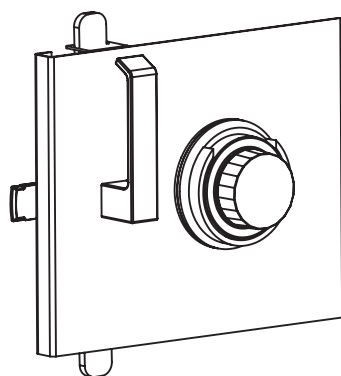
SPECIAL APPLICATION

CLASS B/ CLASS C LOCKS

FEATURES AND SPECIFICATIONS

- High security storage.
- Class B - Digital combination lock.
- Class C - Bi Lock cylinder lock.

Class B

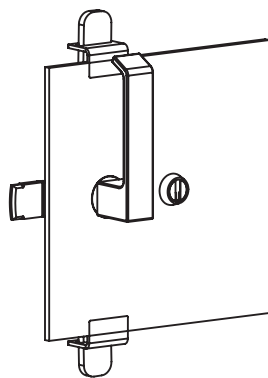


FRONT VIEW

Class B

A/914211-200

Class C



FRONT VIEW

Class C

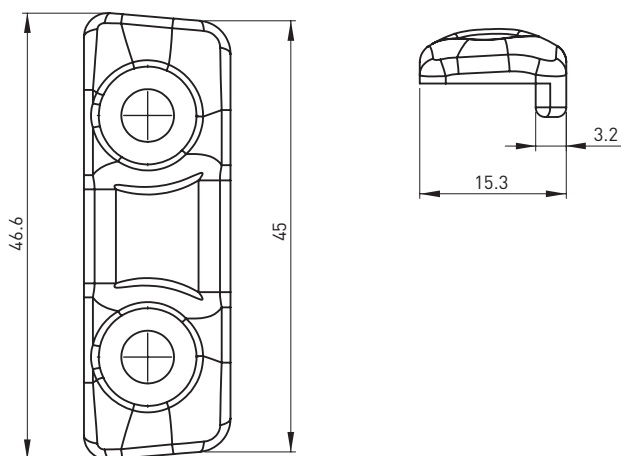
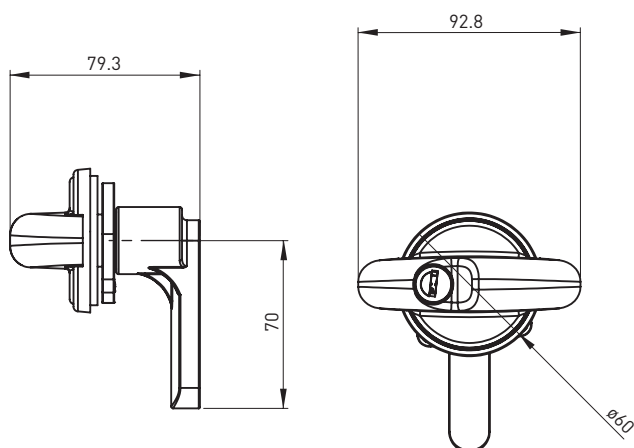
A/914211-100

SPECIAL APPLICATION

UTE CANOPY LOCK

FEATURES AND SPECIFICATIONS

- Replacement product for ARB canopy lock.
- Secures the side and the back window on the canopy.
- Moulded from durable GFN material.
- Packaged with or without barrel.
- Available in 27 series.
- Minimum order quantity applies.



Ute canopy lock – no barrel

A/6600001

Ute canopy lock with barrel and 2 keys

A/6600002

SPECIAL APPLICATION

PROTECTA LOCK

FEATURES AND SPECIFICATIONS

- Salt spray tested to +600hrs, Protecta Lock provides unmatched corrosion protection.
- Provides lubrication for a smoother operation of mechanisms.
- Slight eucalypt scent.
- 30mL squeeze bottle with needle tip and rubber cap.
- Aerosol cans available in two sizes, 100g & 300g.
- Formulated and manufactured in Australia using all Australian ingredients.



QUICK REFERENCE GUIDE

Product*	Product Code
Protecta Lock, 300g Aerosol	AR/916206-300
Protecta Lock, 100g Aerosol	AR/916206-100
Protecta Lock, Retail pack, 30mL	AR/916206-201
Protecta Lock, product only, 30mL	A/916206-202
Protecta Lock, bulk 25L drum	916206-001

*Order requirements apply



WINDOW LOCKS

SASH LOCKS

Designed for aluminium, timber and PVC double hung windows. Features 90 or 180 degree movement and locking barrel.

FEATURES & SPECIFICATIONS

- Available in 90° or 180° handle rotation.
- In-built barrel locks product to secure.
- Detent action in locked and unlocked position.
- Constructed from Zinc diecast.
- Installed with 6G screws (not supplied).
- Available in Black or White colour.
- Personalised handle with logo available.
- Sash lift handle available (sold separately).



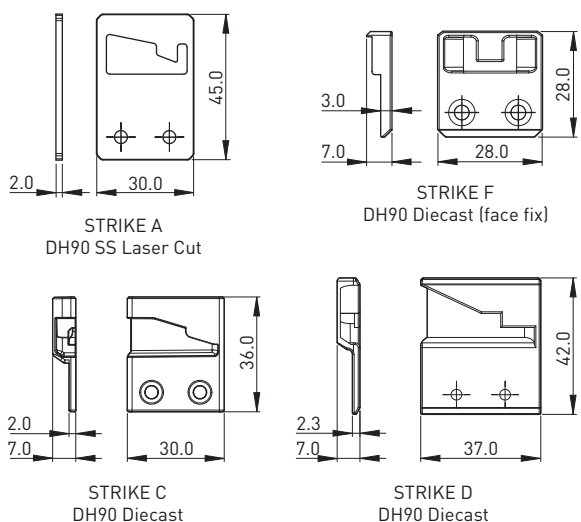
QUICK REFERENCE GUIDE

Lock	Key Series	Handle Rotation	Strikes
DH90	Universal C4, 27, --	90°	A, C, D, F
DH180	Universal C4, 27, --	180°	B, I, T

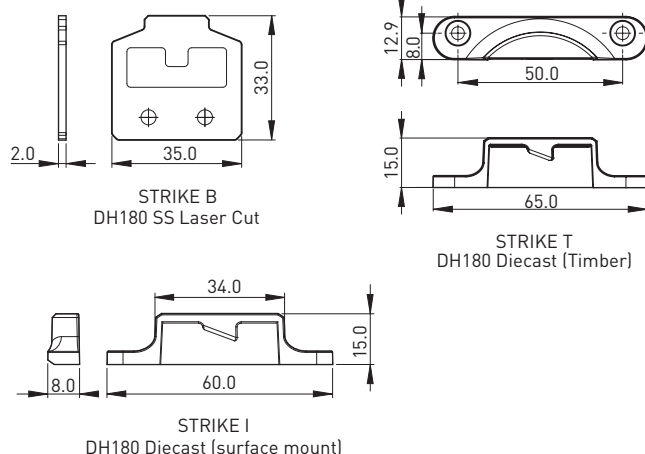
SASH LOCKS

STRIKE OPTIONS

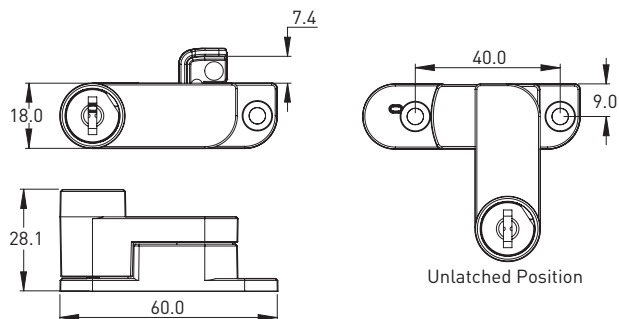
DH90



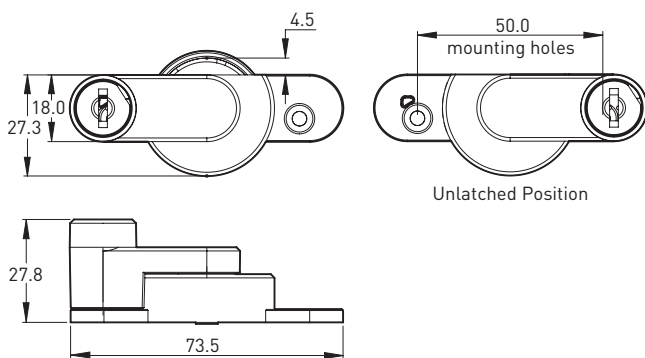
DH180



DH90



DH180



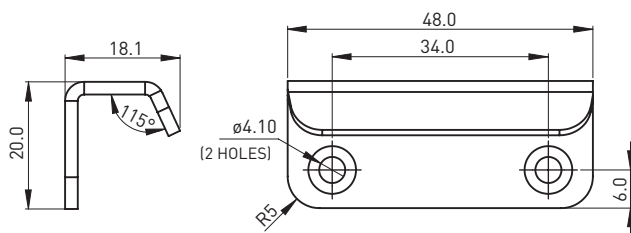
DH90

A/WDH90

DH180

A/WDH180

Sash Lift Handle



Sash Lift Handle

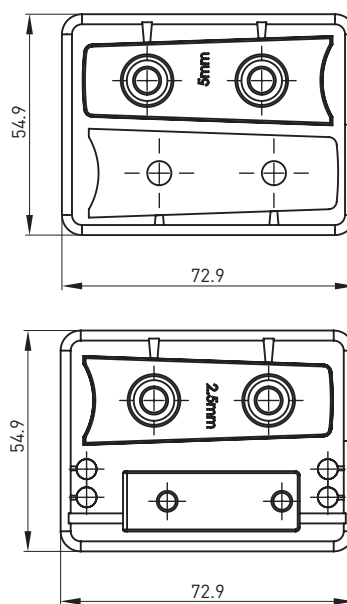
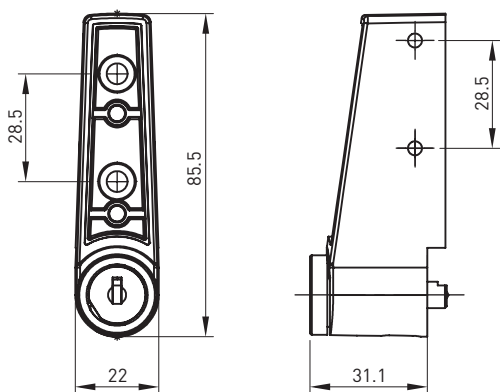
A/915215

SLIDING WINDOW LOCKS

PUSH AND TWIST VENT LOCK

FEATURES & SPECIFICATIONS

- Best suited for aluminium sliding windows.
- Simple push to lock with spring loaded keyed barrel to unlock operation.
- Removable barrel for lock and unlock operation without keys.
- Can be side or front fixed.
- Accessories supplied to fit multiple window frames.
- Available in Black and White colours.



Push and Twist Vent Lock

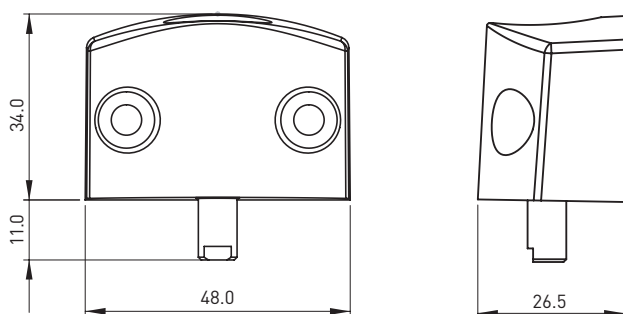
A/915225

MULTI - PURPOSE LOCKS

WINDOW PUSH LOCK

FEATURES & SPECIFICATIONS

- Designed to suit a wide range of windows.
- Simple push to lock, spring-loaded, keyed barrel to unlock.
- One way fixing screws provided for added security.
- Zinc alloy diecast main body.
- 8mm security bolt.
- Available in Black and White colour.
- Suits Wafer and Universal C4 barrels (sold separately).



6mm extension
pin available

Window Push Lock

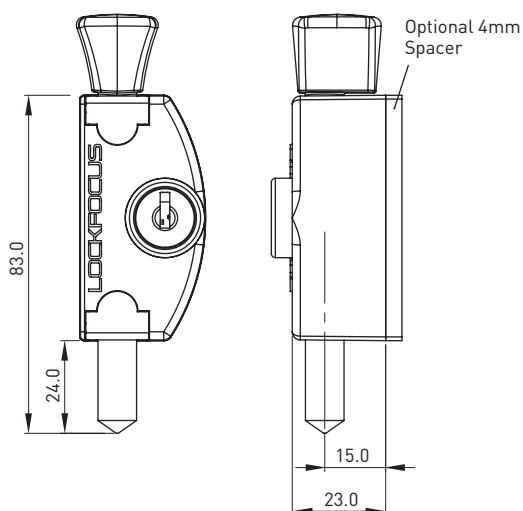
A/915204

MULTI - PURPOSE LOCKS

WINDOW AND MINI WINDOW BOLT

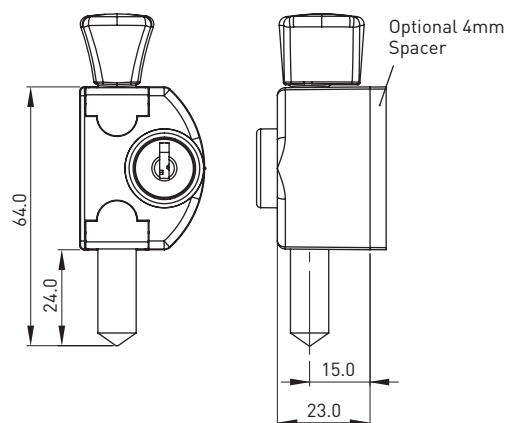
FEATURES & SPECIFICATIONS

- Designed to suit most aluminium and timber frame windows.
- Sleek design styled to sit neatly on window frame.
- Reversible design to allow left or right installation.
- Keyed locking barrel for added security.
- Zinc alloy diecast main body.
- 10mm security bolt tested to withstand up to 800kg of force.
- Available in Black and White colour.
- Suits Wafer and Universal C4 barrel (sold separately).



Window Bolt

A/915202



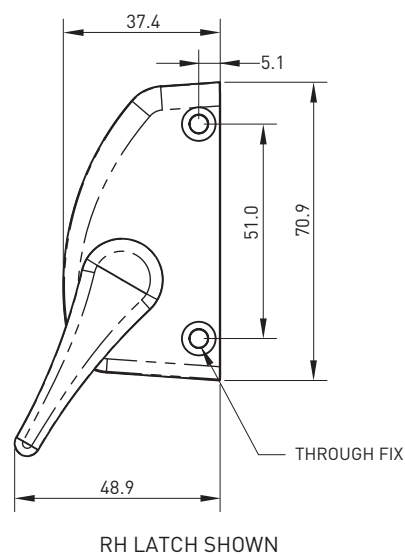
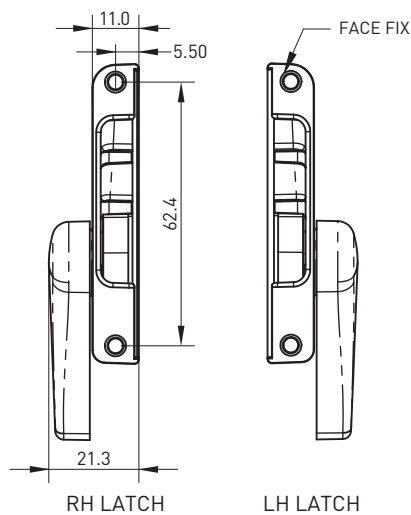
Mini Window Bolt

A/915203

CASEMENT AWNING LATCH

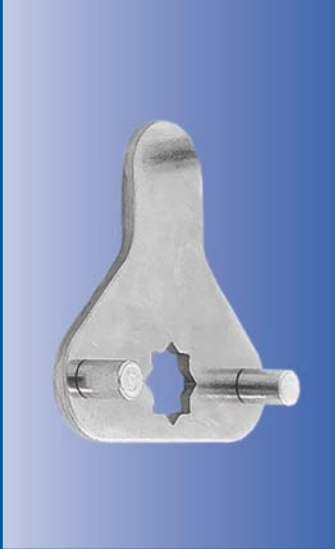
FEATURES & SPECIFICATIONS

- Designed to suit casement and awning windows.
- Zinc alloy diecast main body.
- Stainless steel strike that can be designed to suit customer application.
- Mounted side fix or face fix (can be ordered without side fix holes).
- Comes as a pair (LH and RH latches).



Casement

A/91701



APPENDIX A & B

APPENDIX A

PRESSED CAM RANGE

FEATURES & SPECIFICATIONS

- Fitted to a range of locking products.
- Ideal for sheet metal products.
- Pressed from steel (steel grade is product specific).
- Many variations available, including mounting hole shape, end detail, and bending options.
- Custom product available upon request.

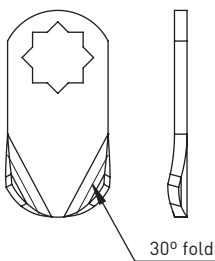


CAM TYPES

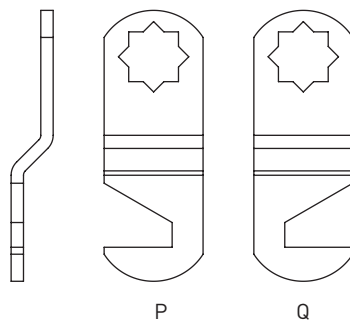
Flat	F
Single Bend	B1
Double Bend	B
Hooked	H
Single Point Pinned	P1
2-Point Pinned	P2
3-Point Pinned	P3
3-Point Locking	3P

PRODUCT OPTIONS

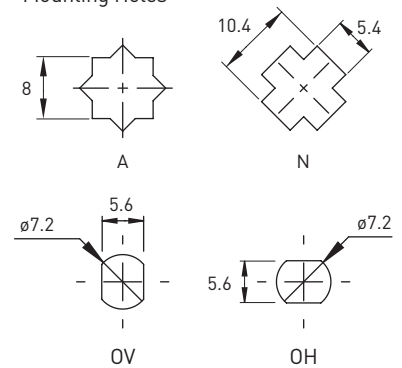
Caulking (C)



Notching (N)



Mounting Holes

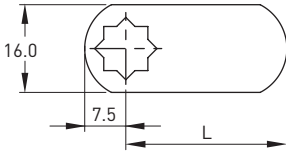


Ordering Details

P/CAM type/cam no./2+caulked or notched+notch type Ordering example: P/CAMB/49/2NP

APPENDIX A

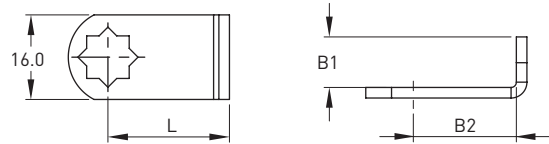
FLAT CAMS



STANDARD CAMS	HOLE	THICKNESS	LENGTH
P/CAM-/01	A	2.0	14.3
P/CAM-/02	A	2.0	19.0
P/CAM-/03	A	2.0	25.4
P/CAM-/04	A	2.0	29.4
P/CAM-/05	A	2.0	31.7
P/CAM-/06	A	2.0	35.0
P/CAM-/07	A	2.0	38.0
P/CAM-/08	A	2.0	41.3
P/CAM-/09	A	2.0	44.5
P/CAM-/10	A	2.0	47.6
P/CAM-/11	A	2.0	50.8
P/CAM-/12	A	2.0	54.0
P/CAM-/13	A	2.0	57.2
P/CAM-/14	A	2.0	59.5
P/CAM-/24	A	2.0	85.5
P/CAM-/K2	A	2.0	102.8
P/CAM-/K5	A	2.0	16.3
P/CAM-/K6, special notch	A	2.0	25.4
P/CAM-/R4	A	2.0	40.0
P/CAM-/RH, squared end	A	2.0	20.0
P/CAM-/Z7	A	3.0	28.5
P/CAM-/65	N	2.0	28.5
P/CAM-/66	N	2.0	38.0
P/CAM-/Y1	OH	3.0	25.0
P/CAM-/Y2	OH	3.0	28.5
P/CAM-/Y3	OH	3.0	30.0
P/CAM-/Y4	OH	3.0	35.5
P/CAM-/Y5	OH	3.0	38.0
P/CAM-/Y6	OH	3.0	40.0
P/CAM-/Y7	OH	3.0	45.0
P/CAM-/Y8	OH	3.0	51.0
P/CAM-/X1	OV	3.0	25.0
P/CAM-/X2	OV	3.0	28.5
P/CAM-/X3	OV	3.0	30.0
P/CAM-/X4	OV	3.0	35.5
P/CAM-/X6	OV	3.0	40.0
P/CAM-/X7	OV	3.0	45.0
P/CAM-/X8	OV	3.0	51.0

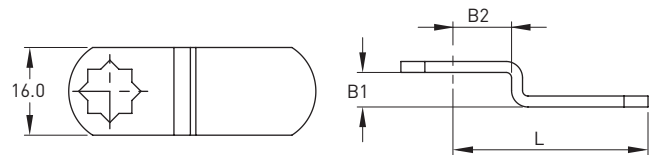
Selected cams available in caulked or notched options

SINGLE BEND CAMS



STANDARD CAMS	HOLE	THICKNESS	LENGTH	B1	B2
P/CAMB/43	A	2.0	23.0	9.5	21.0
P/CAMB/AR	A	2.0	33.0	9.5	31.0
P/CAMB/AX	A	2.0	19.9	6.3	17.9
P/CAMB/DC	A	2.0	22.3	14.0	20.3
P/CAMB/IC	A	2.0	13.6	19.0	11.6
P/CAMB/K3	A	2.0	13.0	7.3	11.0

DOUBLE BEND CAMS



STANDARD CAMS	HOLE	THICKNESS	LENGTH	B1	B2
P/CAMB/17	A	2.0	37.0	6.3	12.7
P/CAMB/26	A	2.0	34.0	3.2	21.5
P/CAMB/39	A	2.0	29.6	8.0	12.7
P/CAMB/41	A	2.0	47.1	12.7	12.7
P/CAMB/45	A	2.0	46.0	11.1	12.7
P/CAMB/50	A	2.0	22.3	4.8	12.7
P/CAMB/51	A	2.0	28.0	3.2	12.7
P/CAMB/52	A	2.0	40.2	3.2	12.7
P/CAMB/53	A	2.0	33.3	4.8	12.7
P/CAMB/54	A	2.0	52.3	4.8	12.7
P/CAMB/55	A	2.0	31.0	6.3	12.7
P/CAMB/56	A	2.0	32.6	8.0	12.7
P/CAMB/57	A	2.0	51.8	8.0	12.7
P/CAMB/58	A	2.0	28.5	9.5	12.7
P/CAMB/59	A	2.0	32.8	11.1	12.7
P/CAMB/60	A	2.0	39.0	11.1	12.7
P/CAMB/61	A	2.0	31.0	12.7	12.7
P/CAMB/62	A	2.0	27.9	12.7	12.7
P/CAMB/64	A	2.0	34.3	6.3	12.7
P/CAMB/69	A	2.0	36.3	4.8	12.7
P/CAMB/AC	A	2.0	39.0	8.0	12.7
P/CAMB/AL	A	2.0	37.4	2.0	12.7
P/CAMB/AP	A	2.0	26.0	8.0	10.7

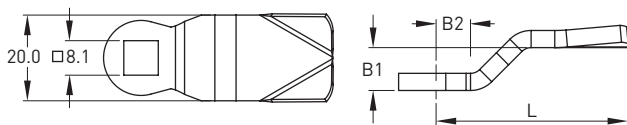
APPENDIX A

DOUBLE BEND CAMS cont.

STANDARD CAMS	HOLE	THICKNESS	LENGTH	B1	B2
P/CAMB/AQ	A	2.0	32.0	18.7	12.7
P/CAMB/BD	A	2.0	50.5	2.0	12.7
P/CAMB/BZ	A	2.0	41.3	18.7	12.7
P/CAMB/CAP	A	2.0	37.0	3.2	12.7
P/CAMB/CM	A	2.0	30.0	4.8	12.7
P/CAMB/CS	A	2.0	19.3	12.7	9.0
P/CAMB/DV	A	2.0	42.8	4.8	10.0
P/CAMB/HM	A	2.0	43.5	12.7	21.3
P/CAMB/K1	A	2.0	23.5	36.6	10.5
P/CAMB/K2	A	2.0	31.0	78.0	10.0
P/CAMB/M1	A	2.0	46.5	3.2	12.7
P/CAMB/SE	A	2.0	24.5	8.0	7.5
P/CAMB/WD	A	3.0	53.5	17.0	43.5
P/CAMB/ZM	A	3.0	46.5	3.2	12.7
P/CAMB/68	N	2.0	28.0	3.2	12.7
P/CAMB/WB	N	2.0	27.4	3.2	12.7
P/CAMB/Y9	T	3.0	25.8	6.3	10.0

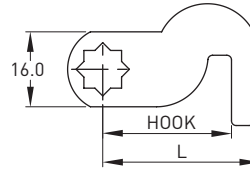
Selected cams available in caulked or notched options

BENT S CAMS



STANDARD CAMS	HOLE	THICKNESS	LENGTH	B1	B2
P/CAM-/S1	T	4.0	44.5	10.3	10.0
P/CAM-/S2	T	4.0	48.4	-	-
P/CAM-/S3	T	4.0	48.0	2.0	12.5
P/CAM-/S6	T	4.0	46.3	8.0	10.0
P/CAM-/S8	T	4.0	45.0	14.0	10.0
P/CAM-/S9	T	4.0	45.0	26.0	15.0
P/CAM-/SC	T	4.0	47.4	4.0	10.5
P/CAM-/SD	T	4.0	45.0	21.0	15.0
P/CAM-/SE	T	4.0	45.0	29.0	15.0
P/CAM-/SF	T	4.0	47.4	-2.5	12.5
P/CAM-/SG	T	4.0	42.0	20.0	8.0
P/CAM-/SH	T	4.0	40.0	44.0	15.0
P/CAM-/SN	T	4.0	38.0	32.0	15.0
P/CAM-/SW	T	4.0	45.0	34.0	15.0

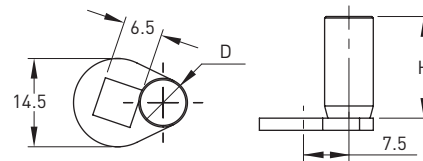
HOOKED CAMS



STANDARD CAMS	HOLE	THICKNESS	LENGTH	HOOK
P/CAM-/H0	A	2.0	35.5	29.5
P/CAM-/H1	A	2.0	27.5	21.5
P/CAM-/H3	A	2.0	33.5	27.5
P/CAM-/H9	A	2.0	52.3	46.3
P/CAMB/HE*	A	2.0	33.5	27.5

* P/CAMB/HE is also bent, B1=2.5, B2=13.0

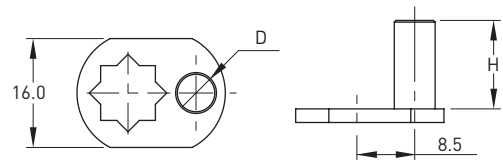
SINGLE POINT PINNED - T



STANDARD CAMS	HOLE	THICKNESS	D	H
P/CAMP/82	T	2.0	8.0	14.2
D/CAM-/D4*	T	2.0	6.0	13.0
D/CAM-/D82*	T	2.0	8.0	14.2
D/CAM-/D85*	T	2.0	8.0	16.7
P/CAMP/88	T	2.0	6.0	19.0
D/CAM-/MS*	T	2.0	5.0	21.0
P/CAMP/RA	T	2.0	5.0	45.0

*D/ cams constructed from diecast zinc

SINGLE POINT PINNED - A

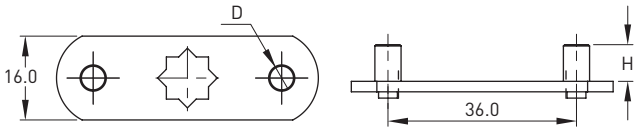


STANDARD CAMS	HOLE	THICKNESS	D	H
P/CAMP/22	A	2.0	8.0	14.2
P/CAMP/27	A	2.0	6.0	13.0
P/CAMP/28	A	2.0	4.0	51.0
P/CAMP/29	A	2.0	6.0	37.0
P/CAMP/AS	A	2.0	5.0	21.0
P/CAMP/EB	A	2.0	4.0	56.0
P/CAMP/JW/2P*	A	2.0	5.0	21.0

* P/CAMP/JW/2P is also bent, L=34.5, B1=8.0, B2=12.7

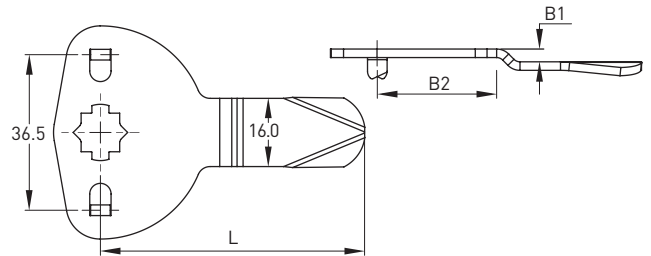
APPENDIX A

2 POINT PINNED



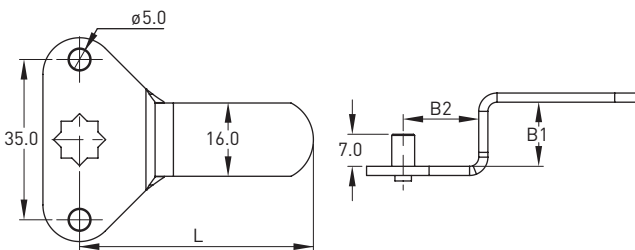
STANDARD CAMS	HOLE	THICKNESS	D	H
P/CAMP/21	A	2.0	5.0	7.0

3 POINT LOCKING



STANDARD CAMS	HOLE	THICKNESS	LENGTH	B1	B2
P/CAMB/F1	A	2.0	62.0	3.0	28.0
P/CAMB/F2	A	2.0	62.0	-3.0	28.0
P/CAMB/F3	A	2.0	59.3	9.4	26.0

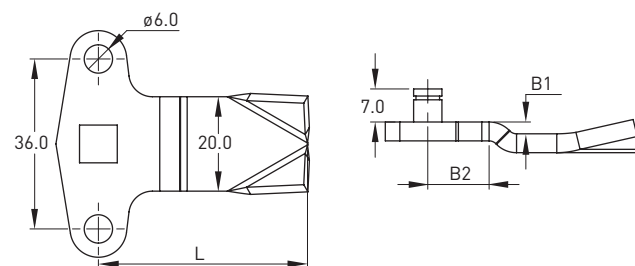
3 POINT PINNED - A



STANDARD CAMS	HOLE	THICKNESS	LENGTH	B1	B2
P/CAMP/71	A	2.0	36.5	-	-
P/CAMP/72	A	2.0	64.5	-	-
P/CAMP/73	A	2.0	60.0	3.2	15.5
P/CAMP/74	A	2.0	56.0	9.5	16.5
P/CAMP/75	A	2.0	54.0	12.7	16.5
P/CAMP/76	A	2.0	50.0	16.0	16.5

Selected cams available in caulked option

3 POINT PINNED - T

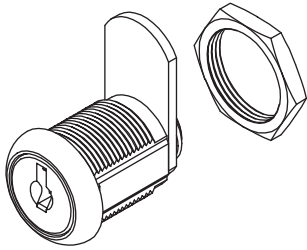


STANDARD CAMS	HOLE	THICKNESS	LENGTH	B1	B2
P/CAMP/3A	T	4.0	45.0	-	-
P/CAMP/3B	T	4.0	44.6	2.5	13.0
P/CAMP/3C	T	4.0	45.5	-10.3	13.0
P/CAMP/3D	T	4.0	47.5	-4.0	12.0
P/CAMP/3E	T	4.0	45.0	-8.0	13.0

APPENDIX A - FIXING

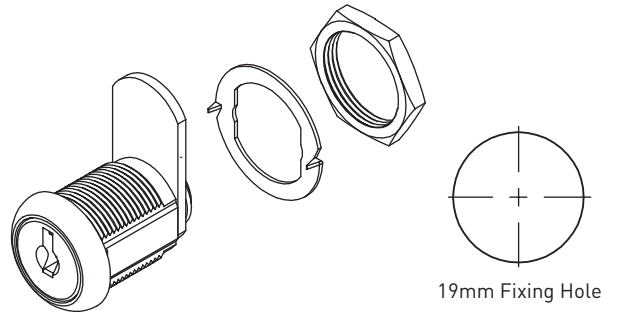
NUT FIXING DETAILS - TYPE N

- Able to accommodate panels of various thicknesses.



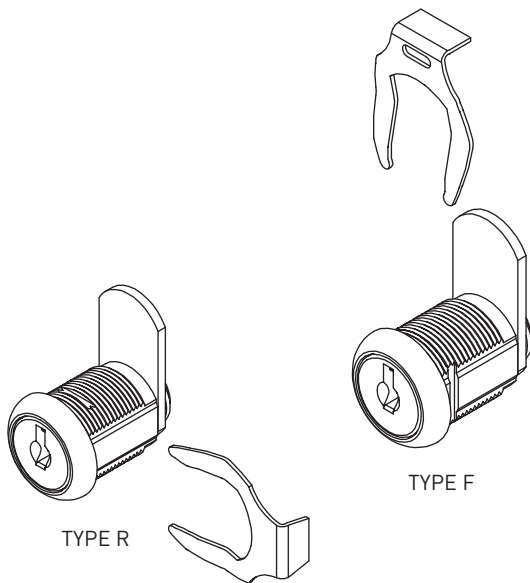
WOODEN FIXING DETAILS - TYPE W

- Pronged washer prevents lock from rotating in hole.



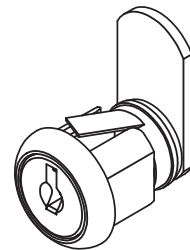
SPRING CLIP FIXING DETAILS

- Classified as TYPE R and TYPE F (see image for details).
- Provide quick fix solution for rapid installation.
- Suitable for material thicknesses greater than 0.9mm.
- Material thickness to be classified when ordering -fixing grooves will be machined prior to supply to allow for clip.



QUICK FIX CLIP - TYPES Q, K, Z & Y

- Suits metal panel thickness 0.5mm to 0.9mm.



APPENDIX B - MOVEMENT

GENERAL

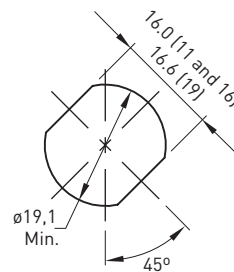
MOVEMENT	DESCRIPTION
B	180° clockwise or anti-clockwise to unlock
S	90° clockwise to unlock
A	90° anti-clockwise to unlock
C	90° clockwise or anti-clockwise to unlock

BIN LOCKS

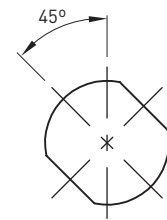
MOVEMENT	DESCRIPTION
S	90° clockwise to unlock-key held captive in unlocked position
C	90° clockwise or anti-clockwise-key removable
T	Three-way keying

C MOVEMENT CAMLOCK

- Key removable in locked or unlock positions.
- 90° movement, clockwise or anti-clockwise to unlock.
- Available with round face only, and nut fix only.
- Only available in 11mm, 16mm, or 19mm.
- Use installation cut-out below to ensure barrel appears vertical in locked position.



Clockwise movement to unlock



Anti-clockwise movement to unlock

WARRANTY

WARRANTY/ GUARANTEE

Warranty/Guarantee

Lock Focus guarantees its product ranges against defects, in workmanship and materials for all mechanical product for a period of 2 years. Electrical and electronic components are warranted for a period of 12 months from the date of purchase. Should the product be found to be defective within its normal working life, Lock Focus will repair or replace the same or equivalent product free of charge upon receipt of proof of purchase. Under this product warranty Lock Focus assumes no responsibility for the following:

1. Failure to adhere to fitting instructions or faulty installation.
2. Product wear and tear due to improper maintenance.
3. Product failure caused by the use of no Lock Focus products.
4. Unauthorised modifications or repairs made to the product.
5. Use of unauthorised replacement parts.
6. Any costs incurred due to:
 1. Removal and replacement of the product.
 2. Freight and/or travelling time.
 3. Any modifications or repairs to the product unless authorised by Lock Focus.
7. Personal injury, property damage or economic loss however caused.
8. Damage caused by corrosion when the product is installed in a corrosive environment.

Nothing in the Lock Focus product warranty excludes restricts or modifies in any condition, warranty, right or liability implied or protected by law to do so would render the guarantee or part of it void.

Returned Goods

Notification of faulty product must be reported back to Lock Focus within 14 working days from receipt of product. Please contact Customer Service to obtain a Field Returns number, the parcel being returned must be clearly labelled with the Field Return number.

Australian Consumer Law Requirements

The Australian Consumer Law also requires Lock Focus to state in relation to the Warranty that:

(a) Lock Focus gives the Warranty and the name, address, telephone number and email address of Lock Focus:

Lock Focus, 15-17 Futura Road, Keysborough, 3173 Melbourne Victoria, Australia ABN 43 007 311 300.

Email: sales@lockfocus.com.au, Telephone: + 61 3 9798 1322

(b) The Warranty is in addition to other rights and remedies you may have under a law in relation to the goods to which the Warranty relates.

(c) Our goods come with guarantees that cannot be excluded under the Australian Consumer Law. You are entitled to a replacement or refund for a major failure and for compensation for any other reasonably foreseeable loss or damage. You are also entitled to have the goods repaired or replaced if the goods fail to be of acceptable quality and the failure does not amount to a major failure.

TERMS & CONDITIONS

CONDITIONS

The conditions below apply in the supply of all goods by Lock Focus (ABN 43 007 311 300) to you and on you placing an order with us constitute an agreement between you and us.

1. General

These terms and conditions shall apply to the exclusion of all others, including any terms and conditions of the Customer (whether on the Customer's order form or otherwise). The Customer acknowledges that these terms and conditions embody the whole agreement between the parties and agrees to be bound by them.

2. Payment Terms

Payment shall be made by the Customer to the Credit Provider for all goods supplied, work and labour done and services rendered within 30 days from date of invoice. The Customer acknowledges that time is crucial with regards to payment and that any breach of this term will enable the Credit Provider to exercise all of his rights contained herein, including (but without in any way limiting his rights) the right to cancel further credit and to take legal action for the recovery of all sums outstanding.

3. Costs

Should payment remain outstanding beyond the Credit Provider's payment terms, as outlined in Clause 2 above, the Customer is liable for all costs, including legal costs (on Solicitor/own client basis) and mercantile agents fees incurred by the Credit Provider in recovering the amount outstanding.

4. M.O.V.

A Minimum Order Value of \$100 applies.

TERMS & CONDITIONS

5. Delivery

(a) Goods shall be delivered to the address specified in the credit application as the address for delivery, unless otherwise agreed between the two parties.

(b) In the event that a delivery date is specified by the Customer, the Credit Provider shall use his best endeavours to comply with the Customer's requests. In no circumstances with the Credit Provider be liable for any loss or damage of any kind whatsoever in the event that he is not able to comply with the Customer's request for delivery at a certain time. The Customer acknowledges and agrees that he will not make any claim against the Credit Provider for any loss or damage incurred as a result of late delivery.

(c) Each consignment/invoice shall include a delivery charge.

(d) Overnight bags shall be charged.

6. Claims

(a) The Customer will be deemed to have accepted the goods as being in accordance with his order unless he notifies the Credit Provider in writing of its claims within 14 days of receipt of the goods.
(b) No return of allegedly defective goods will be accepted by the Credit Provider unless he has given prior written authorisation for the return.

7. Warranty

All warranties, whether express or implied and whether statutory or otherwise with regard to the goods supplied by the Credit Provider as to quality, fitness for purpose or any other matter, are hereby excluded, except insofar as any such warranties are incapable of exclusion at law.

8. Change of Ownership

The Customer agrees to notify the Credit Provider in writing of any change in ownership of the Customer within seven (7) days from date of such change and indemnifies the Credit Provider against any loss or damage incurred by it as a result of the Customer's failure to notify the Credit Provider of any change.

9. Cancellation

Orders placed with the Credit Provider cannot be cancelled without the written approval of the Credit Provider. In the event that the Credit Provider accepts the cancellation of any order placed with him, he shall be entitled to charge a reasonable fee for any work done on behalf of the Customer to the date of the cancellation, including a fee for the processing and acceptance of the Customer's order and request for cancellation.

10. Lien

The Customer hereby acknowledges that the Credit Provider has a lien over all goods in his possession belonging to the Customer to secure payment of any or all amounts outstanding from time to time.

11. Jurisdiction

The proper law of all contracts arising between the Credit Provider and the Customer is the law of the State of Victoria and the parties agree to submit to the jurisdiction of the Courts of that State.

12. Titles

Property in any article sold by the Credit Provider shall not pass from the Credit Provider to the Customer until the Customer has paid for the article in full and all cheques and other negotiable instruments have been cleared. The risk for loss or damage to the article shall be entirely at the risk of the Customer upon delivery to the Customer. If any payment for any article sold by the Credit Provider is overdue or if the Customer pays the Credit Provider by cheque (in full or part) and such cheque is not met on presentation by the Credit Provider, the Credit Provider reserves the right to retake physical possession of the goods in full or partial satisfaction of the debt, and for this purpose the Customer hereby consents to the Credit Provider or his agents or servant entering upon the Customer's premises. Monies owed by the Customer to the Credit Provider shall become due immediately upon the commencement of any act or proceeding in which the Customer's solvency is involved.

13. Power to Sell Goods

Nothing herein contained shall prevent the Customer from selling the goods to any third party provided that:
(a) the proceeds of any such sale shall be held in trust by the Customer for the Credit Provider, and
(b) the proceeds of such sale are kept separate from all other monies held by the Customer.

I, the undersigned, in consideration of Lock Focus (ABN 43 007 311 300), herein referred to as the Credit Provider, granting credit to and agreeing to supply goods and/or services to us (herein referred to as the Customer) hereby agree, on behalf of the Customer, to the above terms and conditions.

14. Definitions

14.1 In these terms and conditions:

Associates include employees, agents, authorised representatives and subcontractors;

TERMS & CONDITIONS

Claim includes claim, demand, threat or proceedings;

Costs means and includes all loss, damage, costs, contributions and expenses, including legal costs and expenses incurred in bringing, defending or settling and Claim;

Goods mean the goods to be supplied to you by us as stated in any purchase order or quotation provided by us to you;

GST has the meaning given to it in A New Tax System (Goods and Services Tax) Act 1999;

Loss includes loss, liability, claim, cost, injury, death, demand, threat, damage, penalty or expense (including legal costs in connection with same on a full indemnity basis);

PPSA means the Personal Property Securities Act 2009 (Cth) as modified or replaced from time to time;

PPSR means the Personal Property Securities Register established under the PPSA;

we, our, us means Lock Focus Pty Limited (ABN 43 007 311 300); and

you, your means the Customer.

PRIVACY POLICY

Introduction

This privacy policy sets out how Lock Focus Pty Ltd handles your personal information.

Personal information is any information about you where your identity is apparent, or can reasonably be ascertained, from the information.

Lock Focus's privacy policy is based on openness. Where we request information from you, we will generally state the purpose(s) for its use and to whom it may be disclosed.

Our website may contain links to third party websites. We are not responsible for the privacy policies of any third party websites. We recommend that you review the privacy policy of each website you visit.

Collection of Personal Information

The amount of personal information we collect about you depends on how you interact with us. We will collect personal information from you if you:

Contact us through our website using an online form;

Receive a visit from one of our representatives;

Make a product or service inquiry;

Order a product;

Make a product complaint or warranty inquiry;

Complete an application or enter into an agreement;

Subscribe to our mailing list;

Correspond with us, including by email;

Call our Customer Service line; or

Enter a promotion or competition.

The type of personal information you may provide to us includes your name, position, description, address, email address, business type, telephone, age group, mobile phone number, facsimile number, credit card particulars, bank details and how you heard about us.

By providing your personal information to Lock Focus in this way, including by completing on-line forms and email, you agree to the collection of that information in accordance with this privacy policy.

We collect personal information from you for a number of reasons, including to:

Sell and deliver our products and services to you;

Respond to your questions or requests for information;

Manage warranty claims and provide after sales service;

Improve our service;

Assist us forecast the future demand for our products and services;

Send you direct marketing material by email or post;

Analyse our website usage;

Enhance the content of our website;

Keep a record of our dealings with each other; and

Comply with legal obligations.

If you do not provide us with your personal information, we may not be able to provide you with these services.

TERMS & CONDITIONS

You can generally visit our website without telling us who you are or revealing other personal information.

Credit Reporting Information

Lock Focus also collects financial and trading information from customers in order to establish and manage business and customer relationships. This information is securely held for internal accounting and administration purposes associated with the provision of products and services (including the extension of commercial credit) to customers and in order to enhance our business relationship and level of service.

Collection of commercial credit information is undertaken only with your consent. To complete an application to open an account or extend commercial credit we may ask you to provide: ABN numbers, business name, business structure, trading history and commercial trade references.

Lock Focus may disclose this information to a credit reporting body (such as Veda or Dun & Bradstreet), or trade referees nominated by you, and receive commercial credit information about you. This credit information will only be used to assess your credit worthiness. It will not be used for the purposes of pre-screening of direct marketing by a credit provider, and will not be intentionally disclosed to entities outside Australia.

To the extent that the customer is an unincorporated entity, this is personal information covered by this policy. Information about corporate customers, which is about an identifiable person, is also personal information covered by this policy. Lock Focus does not have a practice of collecting or holding consumer credit information covered by the Credit Reporting Privacy Code.

Enquiries for access to or correction of commercial credit information or credit eligibility information, or complaints about the failure of X to comply with the Privacy Act 1988 (Cth) or the Credit Reporting Privacy Code (if this binds Lock Focus), can be made as set out below under "Access and Correction" and "Queries and Complaints".

Disclosure to Third Parties

Lock Focus recognises the trust you place in us when you give us your personal information and so will not give your personal information to third parties unless:

You have given us your consent to do so;

It is necessary for us to do so to fulfil the primary purpose(s) for which we collected your personal information;

You would reasonably expect us to disclose it for a related purpose; or

We are required to do so by law.

The third parties we will typically share your personal information with include companies in our own corporate group, your authorised representatives and service providers which we use to conduct our business, functions and activities. These organisations may be involved or conduct:

Mailing, shipping or courier operations;

Information technology services;

Legal, auditing, accountancy or other professional services;

Credit reporting services;

Promotions and competitions;

Repair, installation or maintenance services;

Insurance services;

Market research;

Debt collecting function;

Website usage analysis.

We will take reasonable steps to ensure that your personal information is disclosed to such third parties in accordance with this privacy policy and on a confidential basis.

Cross Border Disclosure

If we disclose personal information in countries outside Australia, we will only do so in compliance with all applicable Australian data protection and privacy laws and if we reasonably believe that the information will remain subject to principles for fair handling of the information, which are substantially similar to the applicable Australian privacy laws.

Sensitive Information

We will only collect sensitive information from you relating to race, ethnic origin, membership of political bodies, religion, or trade unions, sexual preferences or activities, criminal record, state of health and medical history with your consent and only use it for the purposes for which it is provided. We do not typically collect such information.

Security

The security of your personal information is of great importance to us, and we take reasonable steps to:

TERMS & CONDITIONS

Keep your personal information secure in a combination of secure computer storage, hard copy files and other access controlled records; and

Ensure you're personal information is protected from misuse, interference, loss and from unauthorised access, modification or disclosure.

We will endeavour to destroy or de-identify your personal information when it is no longer needed for the purpose for which it was provided, unless a legal exception applies.

Access and Correction

We will take all reasonable steps to ensure that your personal information which we collect, use or disclose is relevant, accurate, complete and up-to-date. We appreciate you assisting us by letting us know if your personal information has changed.

You have a right of access to most personal information we hold about you and the right to correct or update your personal information. This right is subject to certain exceptions allowed by law. To request access, please contact our privacy officer, whose contact details are set out below. We will need to verify your identity before meeting your request, which we may require in writing, and we will process it in reasonable time.

Queries and Complaints

If you have any queries relating to our privacy policy, would like more detail as to our privacy practices or believe that a breach of this privacy policy may have occurred, you may contact our privacy officer by email, post or telephone as follows:

The Privacy Officer

Lock Focus at 15-17 Futura Road, Keysborough, Vic 3173
P: 03 9798 1322

If we become aware of any ongoing concerns or problems, we will take these issues seriously and work to address these concerns with you. If, however, you are not satisfied with our response, you may contact the Office of the Australian Information Commissioner on 1300 363 992.

Lock Focus is owned by Safecorp Group.

Updates

From time to time, Lock Focus's policies will be reviewed and may be revised. We reserve the right to change this privacy policy at any time and notify you by posting an updated version on our website at www.lockfocus.com.au

CONTACT US

PHONE: +61 3 9798 1322

Email: sales@lockfocus.com.au



LOCK FOCUS (Head Office)

15 -17 Futura Road

Keysborough, 3173

Victoria, Australia

Telephone: +61 3 9798 1322

Email: sales@lockfocus.com.au

Website: www.lockfocus.com.au



LOCKFOCUS

CREATING SOLUTIONS SINCE 1972

15 - 17 Futura Road, Keysborough 3173

Melbourne Victoria Australia

T: +61 3 9798 1322

E: sales@lockfocus.com.au

www.lockfocus.com.au